



Design air curtain **Magnum**

Control and additional accessories

DITRONIC TOUCH controller

Ditronic controller is fitted with an intelligent processor regulator, designed specifically for Comfort and Design air curtains that are fitted with AC or EC fans. Due to the units sleek design and readable blue colour screen, it is suitable for most kinds of interior design applications (from a basic type to the more expensive stylish type). The controller offers local control, control from superior system (BMS) or Modbus compatibility.



The controller is suitable for the wall mounting and IP20 environment.

The controller is to be connected via cable with the RJ45 connector (see picture).



Dimensions of the controller (mm):

DITRONIC TOUCH

125 long x 90 high x 32 deep

Additional accessories for air curtain **Magnum**

- BMS 0-10V - control the unit by BMS 0-10V
- Door contact 24V - magnetical (DKMG) door contact
- TP - room thermostat 230V for wall mounting
- MAGNUM DELUX - in-built 2 way electrothermic valve including unit lighting
- MAGNUM NEREZ - air curtain in brushed stainless steel, side plates in RAL 9007
- Flexible connection pipes
- Spare filters EU2



The design adaptors for wall-mounting or sub-ceiling mounting are perfectly harmonized with the air curtain's design.



Very low construction height of the air curtain.



Optimum configuration of the exhaust adjustable splines achieves maximum energy savings. Halogen bulb illumination of the entrance opening under the air curtain activated upon turning on the air curtain delivered in standard.

Magnum 04/2018 An



Design air curtain

Magnum

Zastoupení:



STAVOKLIMA s.r.o.

BUDĚJOVICKÁ 450 • 370 01 HOMOLE

tel.: +420 387 001 931

e-mail: info@stavoklima.cz

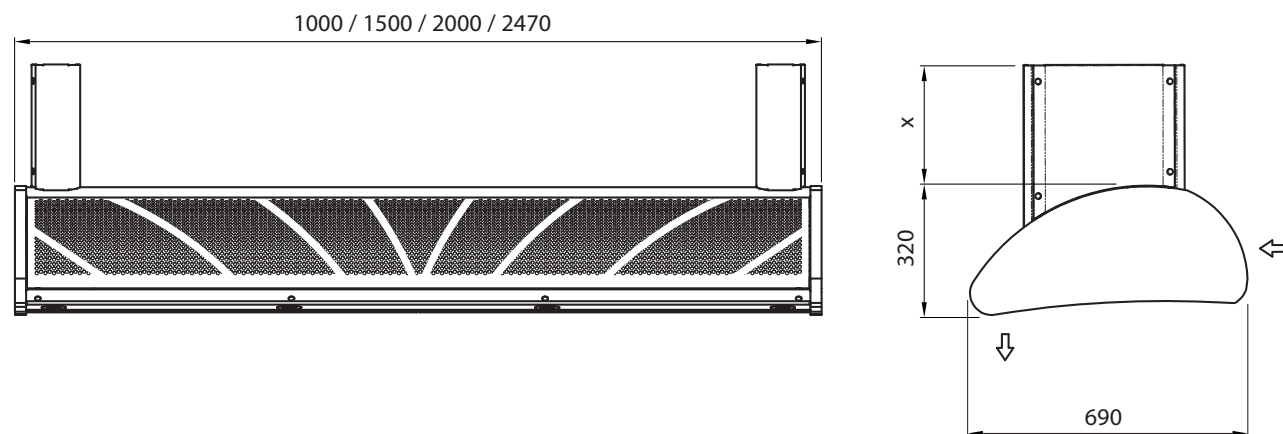
www.stavoklima.eu



www.stavoklima.eu

Basic description of the air curtain

The Magnum design air curtains' shape of an aerodynamic wing makes them absolutely exceptional. Every modern interior requires a balanced solution, and the Magnum design air curtain undoubtedly meets the requirements. Low profile and optional illumination of the entry opening emphasize the harmony of the aerodynamic product. The Magnum air curtain is installed horizontally only. A special set of hinge guarantees concealing of the power cables, heating water, and the hinge.

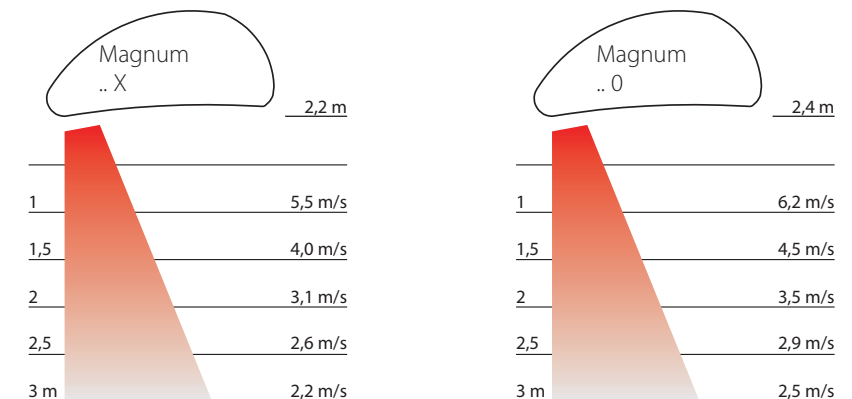


Technical data

Technical data		Magnum 10X W(E)	Magnum 100 W(E)	Magnum 15X W(E)	Magnum 150 W(E)	Magnum 20X W(E)	Magnum 200 W(E)	Magnum 25X W(E)	Magnum 250 W(E)
Airflow - water coil W	m³/h	1600	2120	2400	3150	3280	4100	4090	4950
Airflow - water coil E	m³/h	1550	2150	2480	3110	3350	4000	4180	4900
Water coil heating capacity	[kW]	14,9	17,6	25	29,7	35,2	40,5	44,1	49,8
Water 80/60°C / t _p =18°C water pressure drop	[kPa]	3,5	4,7	7,2	9,8	7,2	9,2	5,3	6,5
water flow	[m³/h]	0,6	0,8	1,1	1,3	1,5	1,7	1,9	2,1
Water connection size	[DN]	25	25	25	25	25	25	25	25
Electric coil** Max. heating capacity	[kW]	7,5	10	15	15	17,5	17,5	17,5	25
mains voltage	[V]	400	400	400	400	400	400	400	400
section	[quantity]	3	3	3	3	3	3	3	3
EC fan electrical data fan power	[W]	330	495	495	660	660	825	825	990
fan current	[A]	2,4	3,6	3,6	4,8	4,8	6	6	7,2
fan voltage	[V]	230	230	230	230	230	230	230	230
Control type	Ditronic Touch								
Protection class		IP22	IP22	IP22	IP22	IP22	IP22	IP22	IP22
Sound level*	dB (A)	57	59	59	60	60	61	61	62
Weight	[kg]	63	66	83	86	121	124	149	152

* Acoustic pressure Lp(A) measurement taken at a distance of 3m from the unit source.

Technical data and recommended airflow coverage for different types of units.



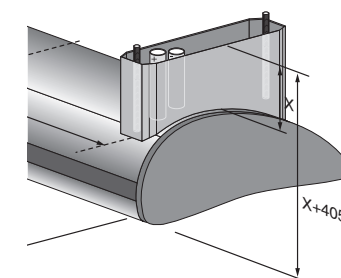
Design properties

- A modern unibody round-shaped structure from metal sheet varnished with RAL 9007 (or other RAL) or from stainless-steel metal sheet.
- Dampened exhaust of the curtain for aximum noise level reduction.
- Highly effective Cu/Al heat exchangers. The Cu/Al 1.6MPa/90°C heat exchangers are available for standard media gradients, and powerful reinforced heaters can be delivered for low-temperature media (60/40; 60/30°C).
- The EC fans with dynamic and static stability for high performance and quiet operation, with overload thermal protection.
- Desludging valves in series connection for hot-water heat exchangers; built-in 2-way electrothermic valve for exhaust or space air temperature control; EU2 quality filters installed as standard – easily removable and detachable.
- The standard three-step electric heaters with heating elements are fitted with spirals with stainless braiding for effective cooling of the body; protection and operation components provide failure-free operation including full electric outfit.

Optional suspensions for Magnum design curtain

With a selection from many types of the hanging models, the Magnum curtain becomes an integral part of demanding architectural designs. The special structure of all hinge types makes sure the power cables, hot water, and the anchoring components are neatly concealed.

Magnum suspension „B“



Magnum suspension „D“

