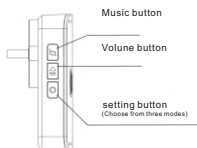


Use manual

Features

Tuya Smart Wireless Doorbell can distinguish and set ringtones, and can set different ringtones for different buttons to easily distinguish the front and rear doors; there are three ways to select the reminder of the host after the bell is pressed: ringing, flashing, sound and light; buttons can be named freely; The mobile phone APP pushes the ringing message in real time, supports viewing the ringing record, and does not miss any visitor; you can set the do not disturb time period, and the host will not emit a sound reminder after ringing the ring; the host button can be freely combined; and it supports linkage with other smart devices To trigger a bell reminder.



1

- (1) Wireless transmission, no wiring required
- (2) The transmission distance can reach 150 meters (open)
- (3) 8-level volume adjustment
- (4) 38 music can be selected
- (5) IP44 waterproof rating
- (6) Intelligent learning code function
- (7) Three ringing modes: ringing and flashing light, only ringing, and only flashing light
- (8) Connect with Tuya APP to realize intelligence;
- (9) Receiver: a variety of plug specifications are available (US/EU/UK/AU plug)

Technical Parameters

working Voltage: AC 220V 50Hz/ 110V 60Hz

Power consumption: 0.5W

Power consumption: 25-85dB

Ring: 38 music

RF frequency: 433MHz/WiFi2.4G

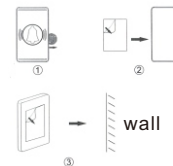
Transmission distance: Open area $\geq 150M$ (barrier-free)

Transmitter: DC 3V (Cr2032 battery)

Transmit power: <10mW

2

Installation method



- (1) Take out the battery insulation sheet of the transmitter (Picture①)
- (2) Peel off the double-sided tape and stick it on the back of the transmitter, press firmly (Figure ②)
- (3) Tear off the other side of the double-sided tape, select the installation location of the transmitter and clean it (try not to be close to iron and metal objects, as metal objects will affect the wireless signal), and press on the wall for more than 30S to fix it Firm (Picture ③)
- (4) Plug the receiver into a regular household socket
- (5) Press the music button of the receiver, select the appropriate volume and music

3

Precautions:

Avoid installation in locations with metal objects or electromagnetic interference (such as iron doors, iron door frames, etc.). The actual remote control distance varies depending on the use environment.

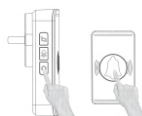
Instructions(It has been paired before leaving the factory and can be used directly)

(1) Set button: Short press to ring the current ringtone, and quickly press the red light flashing twice to enter the pairing doorbell button mode. At this time, press the doorbell button twice to ring the pairing successfully, and quickly press the LED flashing 8 times to clear the doorbell button. Press and hold the Led for 5 seconds to enter the network configuration mode.

(2) Volume adjustment: 8 levels of volume adjustment cycle in turn.

(3) Song selection button: 38 song selection cycles in turn!

4



Network access settings



TuyaSmart



Smart Life

Scan the QR code above,download "TuyaSmart" or "Smart Life" APP,And register to log in, The receiver is plugged into a regular socket. Long press the receiver setting button for 5 seconds, the LED flashes to enter the network distribution mode. Click "Add Device" in the APP and follow the prompts



5

Fault analysis and elimination:

1. The doorbell does not ring:
Check whether the receiver is plugged in and the socket is powered.
2. Short transmission distance:
Metal objects such as iron doors and iron frames will affect the effective transmission distance. Avoid placing transmitters and receivers near metal objects. Walls and ceilings also affect the transmission distance. Interference with other wireless devices, etc.

6