

TECHNICAL DATA SHEET

WARMWALL BLACK

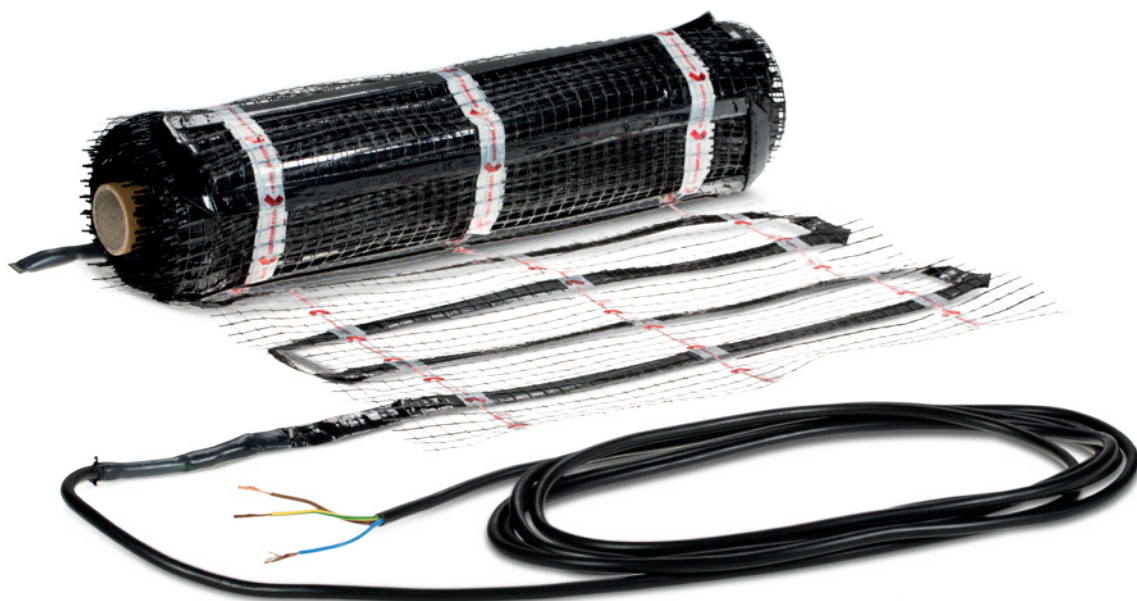
WALL HEATING



Index

Product details	2
Dimension and characteristics	3
Types of wall installation	4

WARMWALL BLACK



Warmset's Black technology has an outer covering in the form of a **polypropylene sheath**.

For its **application to the wall**, the **WarmWall Black** product retains all the technical characteristics of the floor product, with the difference that it can be applied even in those contexts where the use on the ground is difficult or not possible.

The fiberglass mesh on which is fixed the Warmset multilayer laminated ribbon, is gathered in mats for convenient laying; the mesh is also used to be embedded in screed and glue, **preventing breaks and cracks**. Its application to the wall in the various stratigraphies allows to create a **homogeneous radiant surface**, providing thermal comfort especially in those contexts where little power is required, allowing the walls to be covered only in the necessary area. **With a drywall** instead of a fiberglass mesh, is used the **Warmdrywall Aluminum Black**, an aluminum film support with lateral adhesive flaps for fixing to the uprights.



GUARANTEES AND CERTIFICATIONS



DIMENSIONS AND CHARACTERISTICS

WARMWALL BLACK

COVERED AREA (m ²)	DIMENSION LINEAR METER	WITH OPTIMUM INSULATION	WITHOUT OPTIMUM INSULATION
from 0,3 to 3 m ²	width from 0,35 a 0,6 m (standard 0,5 m) length from 0,5 to 6 m	from 250 to 300 W/m ²	from 300 to 400 W/m ²

WARMDRYWALL ALUMINUM BLACK

COVERED AREA (m ²)	DIMENSION LINEAR METER	WITH OPTIMUM INSULATION	WITHOUT OPTIMUM INSULATION
from 0,5 to 1 m ²	width from 0,5 to 0,55 m (standard 0,5 m) length from 1 to 2.5 m	from 300 to 350 W/m ²	from 300 to 400 W/m ²

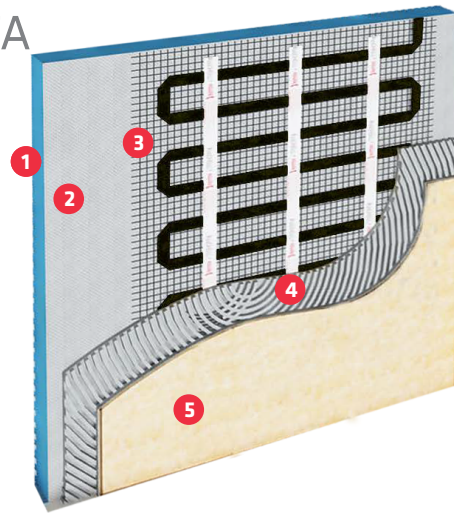
							
ENERGY SAVINGS	STRONG, LONG-LASTING, MAINTENANCE-FREE	EASY TO INSTALL	100% MADE IN ITALY	GREEN TECHNOLOGY	PREVENTS DUST, BACTERIA AND ALLERGIES	AUTOMATED CONTROL	ZERO ELECTROMAGNETIC EMISSIONS

TYPE OF WALL INSTALLATION WARMWALL BLACK

REINFORCED CONCRETE -MALTA



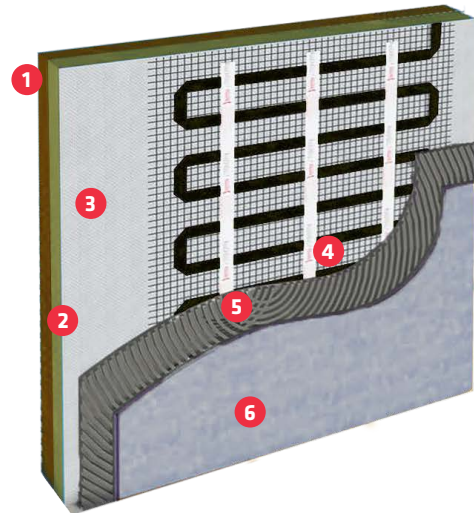
- 1 EXISTENT WALL
- 2 GLUED INSULATION BOARD
- 3 WARMWALL MAT FIXED ON INSULATION BOARD
- 4 THERMAL MORTAR
- 5 COATING



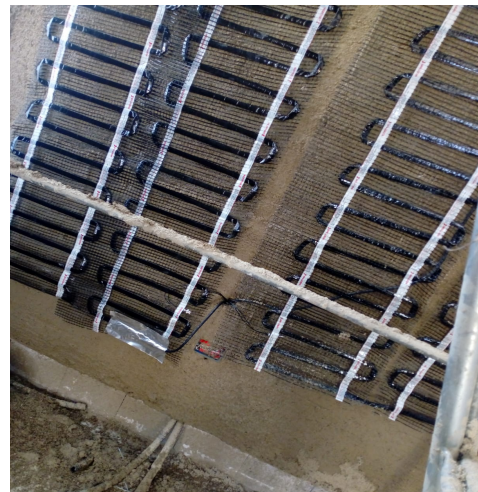
STRAW WALL



- 1 STRAW WALL
- 2 TRELLIS
- 3 MORTAR
- 4 WARMWALL MAT FIXED ON INSULATION BOARD
- 5 CLAY-BASED MORTAR
- 6 COATING



PROJECTS

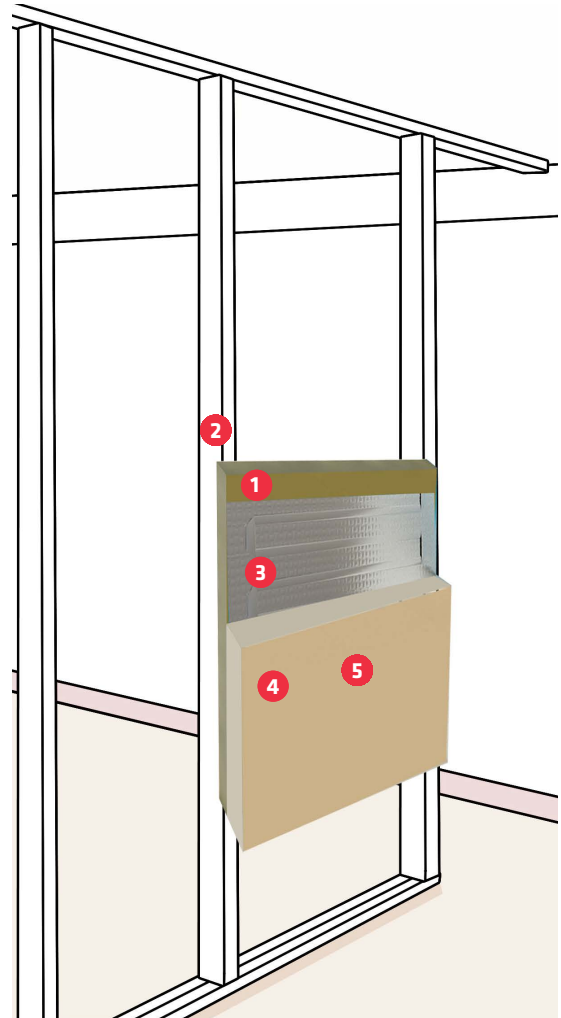
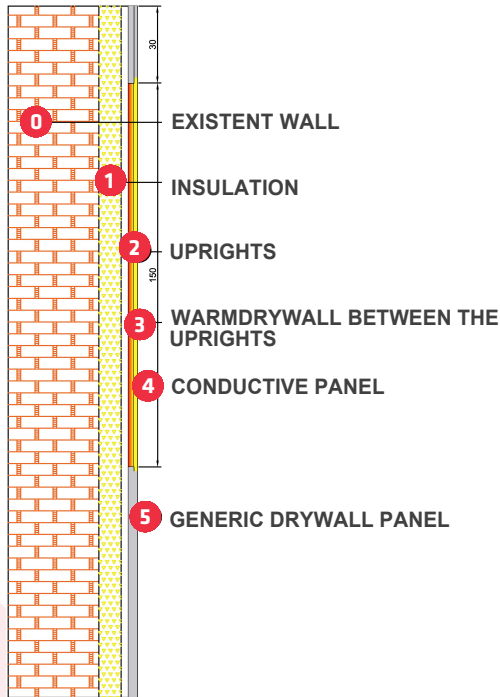


Installation Warmwall on a clay wall

TYPE OF WALL INSTALLATION

WARMDRYWALL ALUMINUM BLACK

DRYWALL



PROJECTS



Installation *Warmdrywall* on drywall

