



INSTRUCTION MANUAL

Horizon 4C
Backlight Bracket

TABLE OF CONTENTS

- PRODUCT INTRODUCTION
- TECHNICAL SPECIFICATIONS
- PACKING LIST
- ASSEMBLY & POSITIONING
- CONNECTION INSTRUCTIONS
- CONTROL INSTRUCTIONS
- APP OPERATION INSTRUCTIONS
- APP FUNCTION INSTRUCTIONS

PRODUCT INTRODUCTION

- App control with smart home linkage
- White color for eye protection
- Up to 16 million colors selectable
- Dimmer adjustment
- Multi scenes customization
- Ambient synchronization
 - ▶ Dimmer sync with volume
 - ▶ Color sync with screen
 - ▶ Rhythmic sync with music

TECHNICAL SPECIFICATIONS

Working Voltage DC 12V / 2A (24W)

Lighting RGB

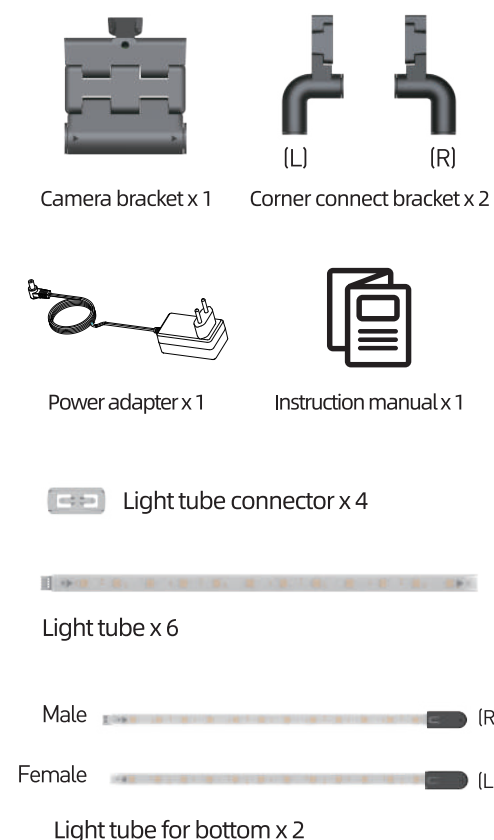
Bracket Button Control

ON/OFF, color sync mode, color switch, Wi-Fi pair

Connection method

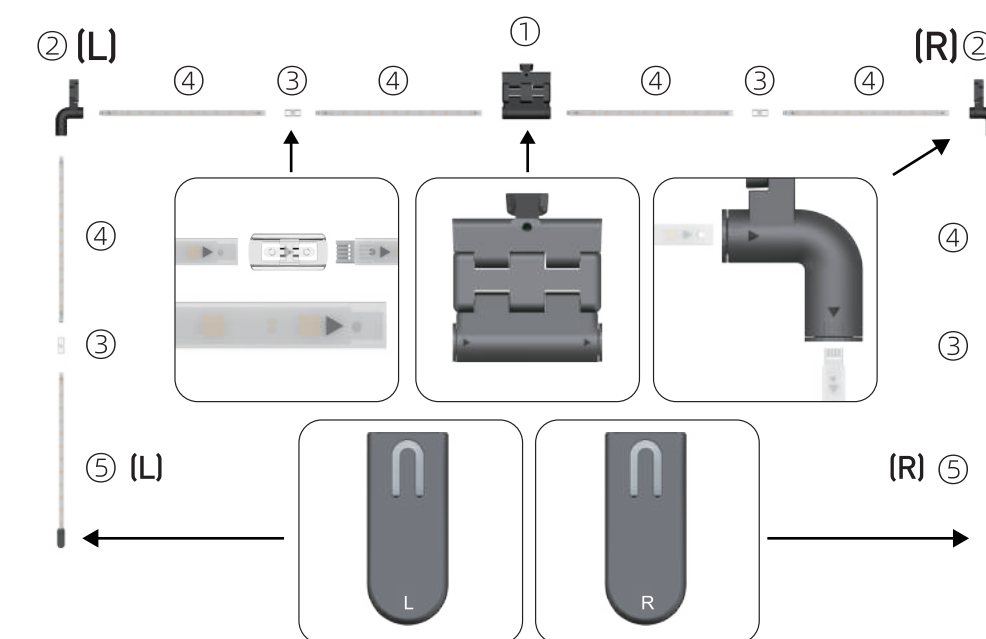
Wi-Fi 2.4G + BLE (made for router 2.4G & 5G mixed mode while pairing)

PACKING LIST



ASSEMBLY & POSITIONING

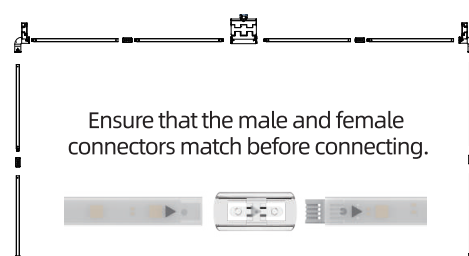
1. Arrange it as shown



Preferably arranging all components on a flat surface, such as a table or floor (with camera upside down)

- ① Camera bracket ② Corner connect bracket ③ Light tube connector
④ Light tube ⑤ Light tube for bottom

2. Connect it as illustrated



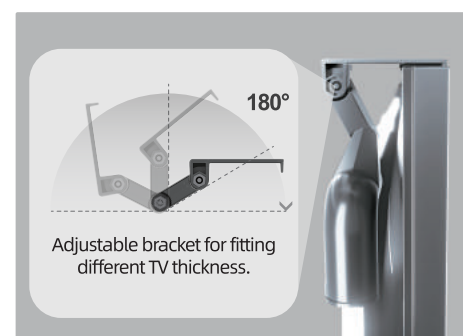
3. Hang Horizon on TV top



4. Make sure to place the Horizon on the center top of your screen.



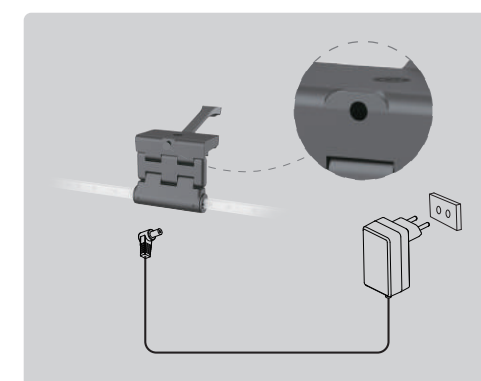
5. Ensure that the top suspension of each bracket is balanced with the top of the TV, while adjusting the lower structure of the bracket to be in close proximity with the back of the TV.



6. Use the included Angle Correction Ruler to correct the camera angle.



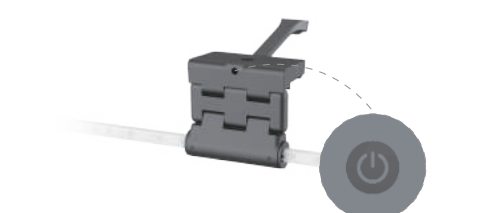
CONNECTION INSTRUCTIONS



Warning

Please use the power adapter included. Do not use the USB port of your TV/PC to power this product.

CONTROL INSTRUCTIONS



Device touch button

- Power on: single click
- Power off: double click
- 7 colors change & color sync mode switch: single click (ON state)
- Wi-Fi pair/ Reset: long press for 5 seconds

App control

16 million colors change, dimmer adjustment, mode switch, smart home control

APP OPERATION INSTRUCTIONS

Step 1

- Scan the QR code. (Fig.a)
- Download the **Tuya Smart** or **Smart Life** from APP store.



(Fig.a)

Step 2

- Connect the device to the power adapter.
- Wait 5-8 seconds until the light flashes quickly, which means the device is ready to pair.
- The light will continue to flash quickly for 3 minutes.
- If the device isn't connected to the APP within 3 minutes, you need to long press button for 5 seconds to reactivate. (Fig.b)



(Fig.b)

Step 3

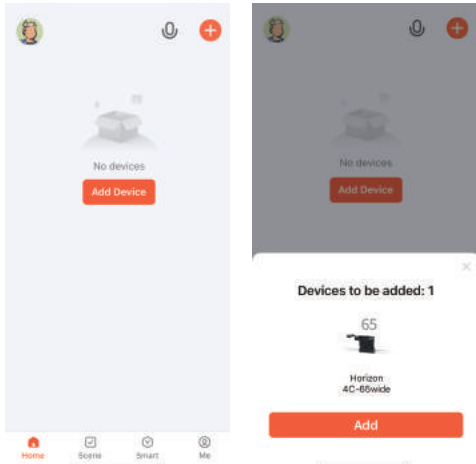
- Make sure the Wi-Fi connected to your phone is the same as the Wi-Fi the product is going to connect to.
- Turn on the Bluetooth on your phone. (Fig.c)



(Fig.c)

Step 4

- Open the APP.
- Click **Add Device** or **+** to add device automatically or manually. (Fig.d)
- It will display a pop-up to add device, then click **Add**. (Fig.e)
- If your device cannot be detected by the APP, you can choose the device shown on the interface to add. Or double check if the Bluetooth is on or whether it can be detected. If your Wi-Fi is 2.4G+ 5G mixed mode, turning on the phone's Bluetooth is necessary.

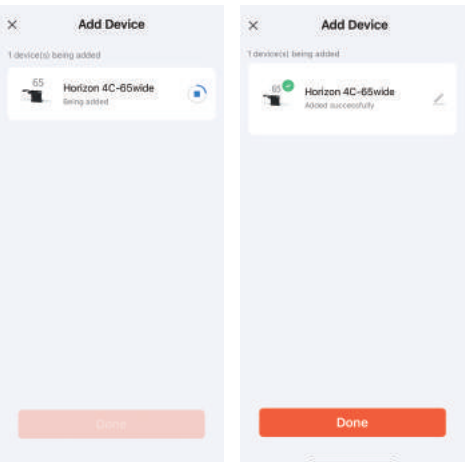


(Fig.d)

(Fig.e)

Step 5

- A pop-up will be displayed if the device is added successfully (product name Horizon 4C) (Fig.f)
- Option: click **✎** to rename device. (Fig.g)
- Click Done to start. (Fig.g)

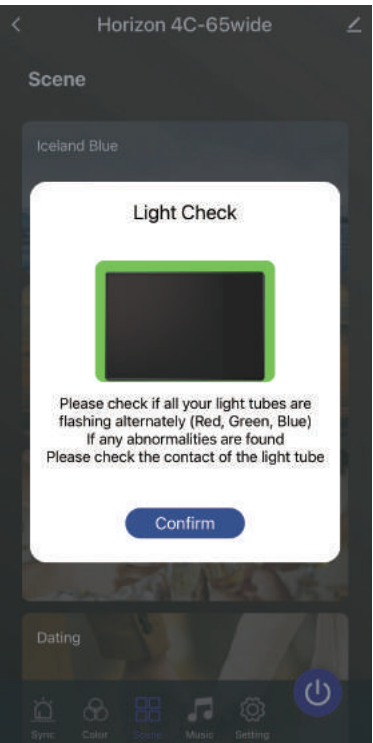


(Fig.f)

(Fig.g)

Step 6

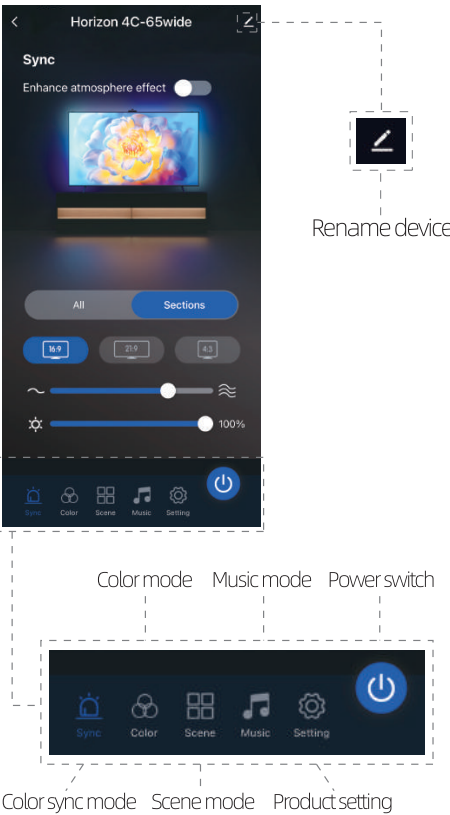
To ensure that all lights are connected properly, check the light colors according to the app procedure. (Fig.h)



(Fig.h)

APP FUNCTION INSTRUCTIONS

1. Introduction of interface



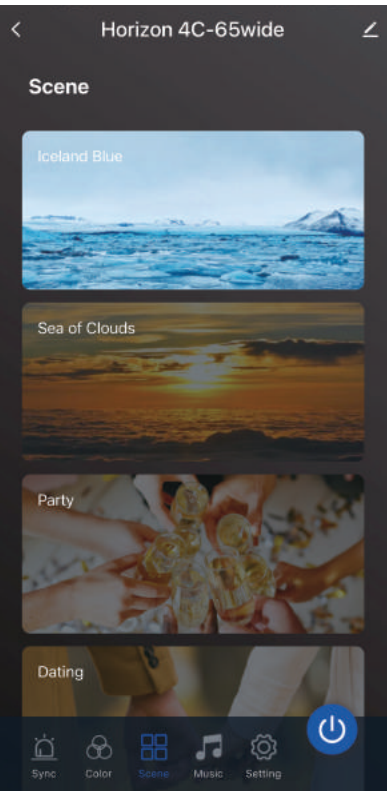
2. Sync mode



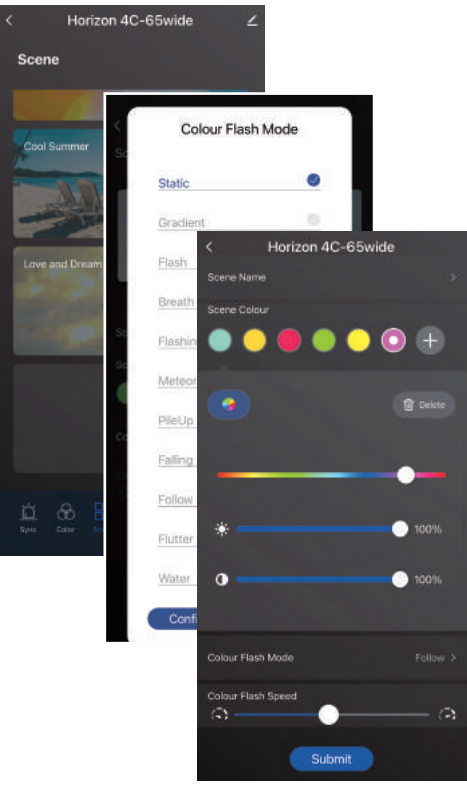
3. Color mode



4. Scene mode

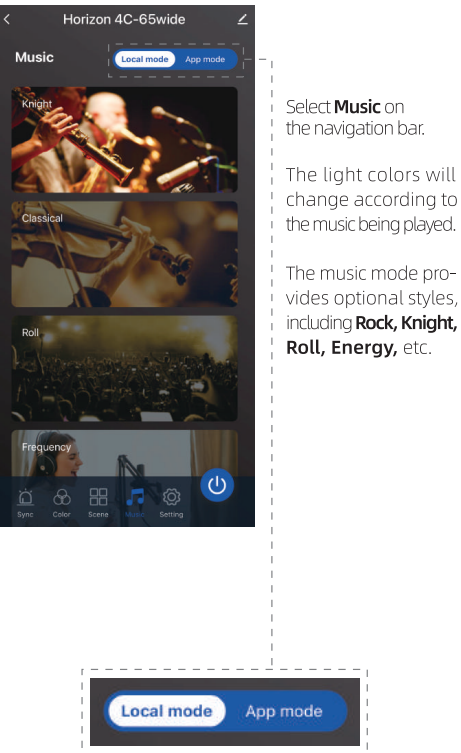


Select **Scene** on the navigation bar. Choose the desired scene according to your mood or environment needs.



Or scroll down and click the **+** button for customized scene configuration

5. Music mode



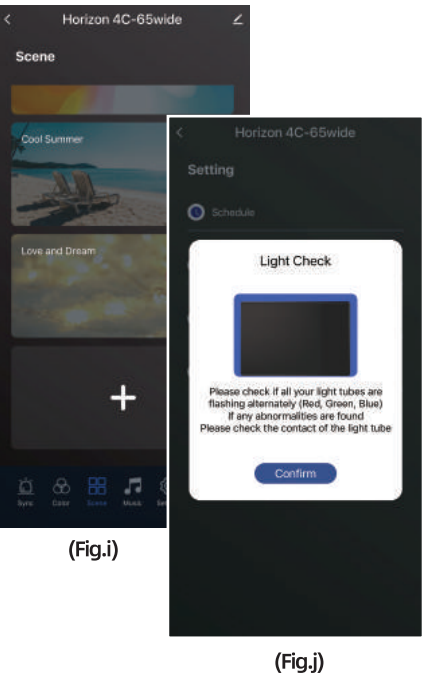
Local mode

Use the device's built-in microphone

App mode

Use the phone's connected microphone for app

6. Setting



- **Schedule**
Set the light schedule according to your needs.
- **Count Down**
To turn off the light at a specific time.
- **Power Memory**
Set status to be remembered after powering on.
- **Light Check**
To identify any problems with the light tubes.(Fig.i)

Get your soul immersed