

Wireless HD Smart Camera

4G Version



Tuya Smart

1、APP download

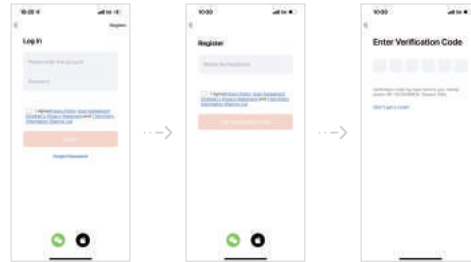
- Please scan below QR code and install“Tuya smart”App.
- Search for Tuya smart App in the Apple store and download it.



Scan and download APP

2、Account register

Register with mobile number or email address, it will be automatically logged into the main interface after registration.



Note: Please contact seller help to finish registration when it can not get verification code.

3、Add device

- ① Open the interface waterproof plug and find power switch button to turn on the camera,camera will boot up around 2 minutes later.
- ② Log in APP.
- ③ Click “+” in the upper right or “add device” on the homepage to add the device.
- ④ Choose“Camera&Lock”-“Smart Camera(4G)”
- ⑤ Following the page tips to generate a QR code.
- ⑥ Use the camera to scan the QR code on the phone to add device.
- ⑦ Experience device after adding successfully.



4、Data top-up

- ① Users need to buy 4G data,Camera's remote access can be used after purchasing 4G data.
- ② If you order monthly data paln,please remember to top up in time,Or remote access will be unavailable once the data plan expires.

Note:

- 1.Effective time for data toping up depends on local operators,It is expected to take effect within 1 hour.
- 2.If you have any questions about using the SIM card,please contact the seller for guidance.

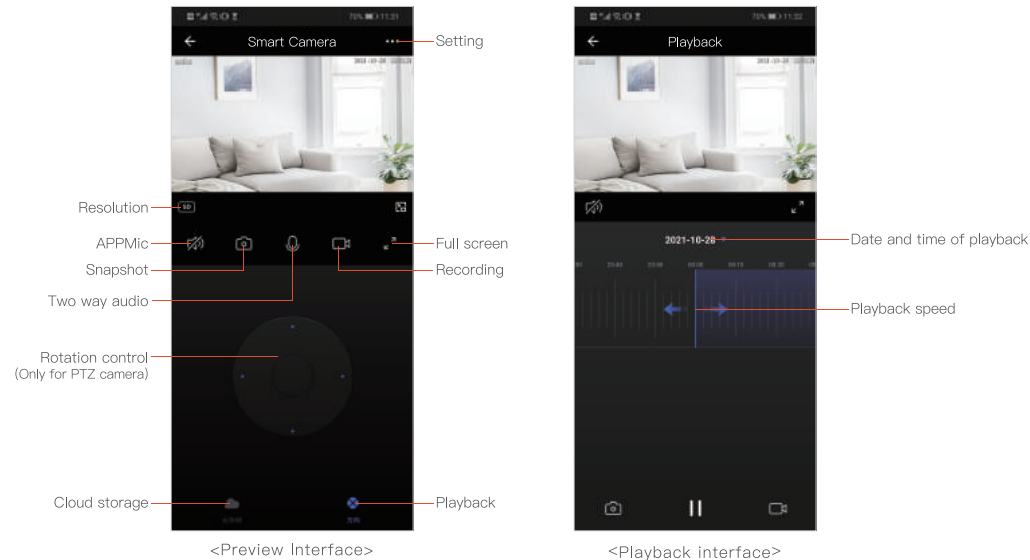
Quick Operation Manual V1.01

Please kindly check this manual and keep it when using the product.



Tuya Smart

5、Function introduction



6、Installation

Note: Please place the camera in installation position and then check and confirm the camera video is normally using through APP before installation.

If it is a battery powered camera, please note the following tips:

- The solar panel can be installed with the camera as a whole, solar panel also can be installed separately with an extended cable when camera was placed on a less light position, please purchase bracket through contacting seller or other way.
- Using outsourcing bracket to install the bullet battery camera, fixing the bracket in the mounting position with screws then fix the camera to the bracket.

Note: As camera using PIR body sensor, to avoid the false trigger caused by environment, rapid consumption of battery power, the installation position should be:

- (1) Avoid strong airflow position, such as air conditioning vents, equipment cooling ports, fan and near to the curtains etc.
- (2) Avoid facing the mirror, glass, and the place with a large number of people and vehicles.
- (3) Lithium battery can work on -10° to $+55^{\circ}$ temperature, too low and high temperature will accelerate the power consumption or even stay charge and discharge protection state then stop working temporarily like batteries of electric car and mobile phone. After the temperature back to normal, the camera will resume operation.
- (4) It is recommended that the camera installation height should be around 2–3 meters following PIR sensor detection distance and angle, too high or low will reduce the accuracy of detection.

7、Questions

1. Why does the camera go into stand-by?

- To extend the battery life, camera will go to sleep when it did not detect any movement, it will automatically wake up and working while movement. You can also wake up camera through APP to view the video and playback.

2. What is the cloud?

- The camera supports local recording by TF card, also can support upload a video to cloud service automatically.
- Video on cloud service with more better security, it will not be lost with damage TF card. But please kindly note cloud services need to pay separately.

3. Why can not receive alarm notification?

- The camera supports alarm message push, if phone does not receive the message push, please check the following settings:
 - (1) Whether the camera is on working, it means APP can view the video normally.
 - (2) On APP, alarm settings—abnormal movement is on enable state.
 - (3) On APP, message center is in on enable state, and did not set any schedule.
 - (4) In mobile phone notification management, APP has obtained notification permission and is in the allowed notification state.

4. Why does the camera offline?

- Camera may occasionally offline for a short time when camera at a position with an unstable signal. But it will go online automatically when the signal is restored due to camera has an auto-link function.

If the camera is often offline, please check the signal at the installation position and consider setting the resolution to SD.