

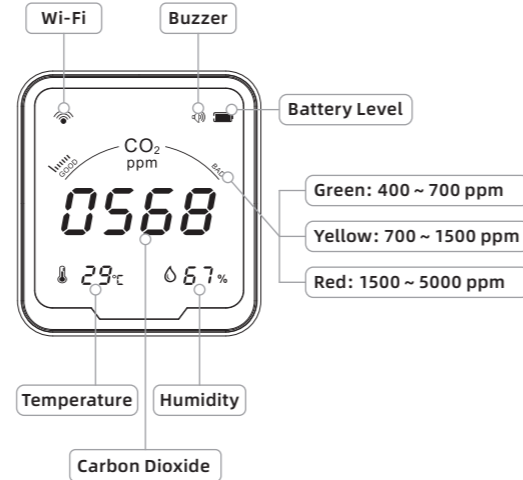
# feelspo<sup>t</sup>

## WS2022 NEW Wi-fi, Tuya CO<sub>2</sub>, temperature and humidity Monitor



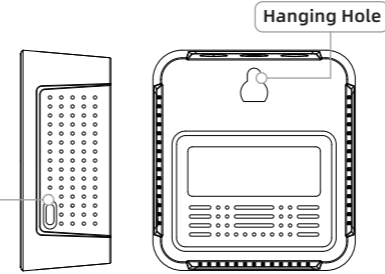
USER MANUAL

### Product Introduction



01

TYPE-C Charging  
(5 V=1 A)



### Specification

Carbon Dioxide Range: 400 ~ 5000 ppm [± (50ppm + 5%) ]  
 Temperature Range: -10°C ~ 40°C (±2°C) / 14°F ~ 104°F (±3.6°F)  
 Humidity Range: 20 ~ 80 % RH (±5 % RH)  
 Product Size: 98 × 90 × 40 mm  
 Power Supply: Built-in Lithium Battery (2400mAh)  
 Wireless Connection: Wi-Fi (only for 2.4GHz Wi-Fi network)  
 Input: 5 V=  
 Packing List:  
 FEELSPOT WS2022 NEW × 1; User Manual × 1; TYPE-C Charging Cable × 1

02

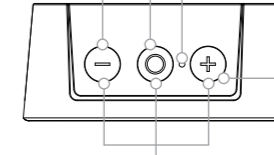
### Operation

Press to turn on/off the backlight in the normal mode, or to minus one in the setting mode. Long press to enter or disconnect the network configuration state.

Double click it to custom CO<sub>2</sub> alarm threshold.

Long press it to turn on or off.

Press it to reset with a pointed object.



Press to switch °C or °F in the normal mode, or to plus one in the setting mode.

Long press it to turn on or off the buzzer.

After powering off, long press the 3 buttons to enter calibration mode then the device begins to count down 200s on the screen. Pay attention to doing it outdoors without people.

Note: When the carbon dioxide concentration value exceeds the set alarm value and the buzzer is on, the buzzer will sound an alarm. Long press "+" button to stop the alarm.

03

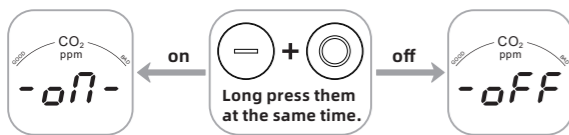
### Customize Sound Alarm Value

You can customize the sound alarm value for this meter.

How to set the sound alarm value?

Double click "⊙" to enter the setting. Then click "+" or "-". Click "⊙" to confirm setting and go back to home page.

### CO<sub>2</sub> Automatic Calibration



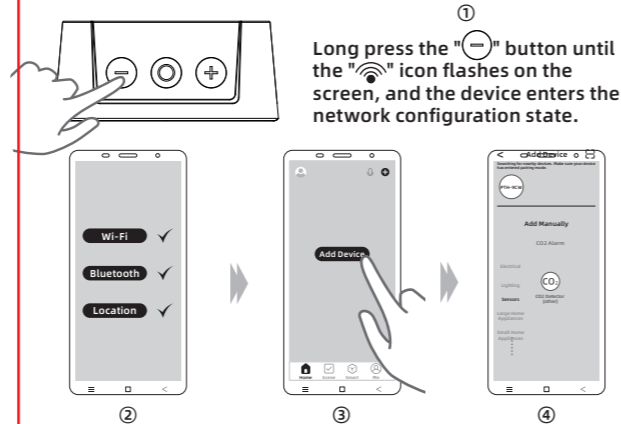
▲ After turning on, the device automatically calibrates CO<sub>2</sub> concentration once every 24 hours.

▲ The time interval of automatic calibration, which will start timing after the device is turned on. During this period, if the device is shut down and restarted, it will start timing again from zero.

▲ Automatic calibration is based on the ambient air environment. If the CO<sub>2</sub> concentration of the environment where the equipment is located is at a high level for a long time, you can turn it off.

04

### How to connect to the app



Turn on Bluetooth, Wi-Fi and location services in your phone.

Click "Home" at the bottom, and click the "+" in the upper right corner or the "Add Device" button in the middle.

Search for the device, click the device icon in the "Discovered" list, and follow the interface prompts.

05

### Note:

- In addition to the "Auto Scan" mode, you can also click the corresponding icon below the "Add Manually", follow the path "Sensors - CO<sub>2</sub> Alarm - CO<sub>2</sub> Detector (other)" and follow the interface prompts to operate.
- During the connection process, it is necessary to ensure that the device and the mobile phone are within 30 meters during the connection process, as Wi-Fi is short-distance connection.
- During the connection process, make sure that the device and the mobile phone are in the same Wi-Fi environment, and only support the 2.4GHz Wi-Fi signal mode.



Scan and download before using

06

### Limited Warranty

#### Note:

- Do not expose this product to water, nor place it in a high temperature environment exceeding 60°C, and keep it away from fire;
- This product is a precision measuring instrument, and it is not allowed to disassemble the machine without authorization;
- Can not be placed in an environment full of dust or corrosive gas for measurement;
- When measuring the environment in the car, please do not expose this product directly to the sun for a long time.

1 year warranty against any manufacturing defects or faulty workmanship. This warranty does not cover disposable batteries or damage from accident, neglect, misuse, alteration, contamination or abnormal conditions of operation or handling.



WEEE Directive 2012/19/EU At the end of the product life, dispose of the device & batteries in a corresponding recycling centre. Do not dispose of the unit with the usual domestic refuse. Do not burn the product.

Made in China



07