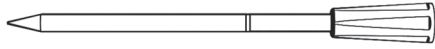


feelspot°t

Smart Wireless Thermometer
FS200

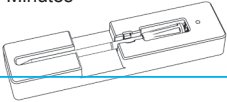


Thank you for choosing Feelspot!

Only a few steps away to use the FS200 thermometer for cook.

Get Started

Charge FS200 for 5~10
Minutes



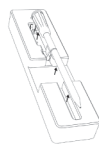
Download the PROBE TEMP App



IOS
Android

Apple store / Google Play

Launch the
PROBE TEMP APP



Remove the
Feelspot FS200
probe
from the charger
to turn it on

Follow the App
instructions to pair
the FS200 for the
first time



Charger LED Status Indicator

- Solid Green: Full Charge
- Solid Red: In the charging

Notice

No Power Switch
The power is constantly consumed.
Please charge the probe before use.

Specification

Supported Devices :	IOS and Android System
APP Name:	PROBE TEMP
Connection Way:	Bluetooth
Wireless Connection Distance:	Over 100 Ft (30 M)
Probe Waterproof Grade:	IPX7
Temp Reading Frequency:	1 Second/time
Temp Measurement Range:	32~212°F (0~100 °C)
Charging Time:	5~10 Mins
Full Power usage time:	4 hours
Charging Method:	Charging stand (USB-Type C)



Warnings

- Feelspot FS200 is designed for use in meat(food).
- The charger block is non-waterproof, do not immerse it in water or other liquids.
- To avoid damage to Feelspot FS200, insertion of the probe in the meat past the Safety Notch in necessary.
- Do not use Feelspot FS200 probes in a microware or pressure cooker. - Feelspot FS200 probes are not dishwasher safe.
- Feelspot FS200 is water resistant, not fully waterproof, do not submerge in water for long periods of time.
- Please take caution with the pointed tip of the probe.
- Probe will be very hot during or just after a cook. Do not touch with bare hands.
- Do not submerge the Feelspot FS200 probe in cold water after cooking. Wait until it has cooled down prior to washing.
- Feelspot FS200 is not a toy, please keep it away from children.
- The internal sensor max is 212 °F (100 °C). Temp above the maximum may potentially damage Feelspot FS200.
- When cooking, ensure any part of the probe is not touching any HOT cooking surface.
- When not in use, store Feelspot FS200 in a dry and cool place.