

AirgoClean 105 S

EN

OPERATING MANUAL
AIR CLEANER



Table of Contents

1. Notes on how to use the manual	A-1
Legend	A-1
2. Scope of delivery	A-1
3. Guarantee provisions	A-1
4. General safety instructions	A-1
5. Function and product characteristics	A-2
6. Technical data	A-2
7. Proper and improper use	A-2
proper use	A-2
improper use	A-2
8. Installation conditions	A-2
9. Description of device	A-3
Air cleaner	A-3
Operating panel	A-3
Display	A-3
Remote control	A-4
10. Installation and commissioning	A-4
11. Functions and operation	A-4
Switching on the air cleaner	A-4
Switching off the air cleaner	A-4
Setting the operating time (timer function)	A-4
Setting the sleep mode	A-5
Setting the fan speed	A-5
Automatic mode	A-6
Filter status	A-6
12. Care and maintenance	A-6
Replacing the filters	A-6
Cleaning the activated carbon filter and the HEPA filter	A-7
Cleaning the air cleaner	A-7
13. Troubleshooting	A-8
14. Replacement filter	A-8
15. Disposal	A-8
Air cleaner	A-8
Filter	A-8
Packaging	A-8
Batteries and rechargeable batteries	A-8
16. Service and repair	A-9

1. Notes on how to use the manual

This operating manual contains all important information required for a safe commissioning and use of your air cleaner.

It provides you with support for operating the device and remedying possible problems as well as with information on disposal and customer service.

Please read this manual thoroughly and completely before using the air cleaner for the first time.

Please store this operating manual and keep it within reach in order to consult it if necessary.

Please observe all safety instructions and information on use and maintenance contained in this manual.

This manual should be attached to the device if the latter is made available to other persons for use.

Legend



WARNING SYMBOL. This symbol is followed by a hazard warning which contains instructions whose non-compliance may cause serious injuries and/or death and/or property damage.



Additional information which might be helpful when using the device.

2. Scope of delivery

The scope of delivery of the air cleaner includes:

- Operating manual
- Air cleaner AirgoClean 105 S with activated carbon filter and HEPA filter (filter class H13)
- Remote control
- 2 batteries, type AAA (for operating the remote control)
- Adapter (country-specific)

3. Guarantee provisions

The warranty period granted for the air cleaner shall be 12 months.

Any damage to the device resulting from non-compliance with the instructions contained in this manual shall be excluded from the guarantee. The manufacturer shall assume no liability for damages to the device and/or its accessories that are caused by unauthorised modifications.

For any further terms of guarantee, please refer to the General Terms and Conditions (GTC), which are available on our website: www.trotec.de.

4. General safety instructions



Please observe the following safety instructions!


Any non-compliance with these instructions may have serious consequences for the health of persons and could result in property damage and damage to the environment.

Risk of explosion!

- Never operate the air cleaner in the vicinity of open fire or gas equipment.
- Remove any inflammable materials and chemicals from the immediate operating environment.

Functional impairment of and damage to the device!

- Never expose the device to excessive heat or direct sunlight.
- The device should not be used outdoor.
- Make sure to keep a minimum distance of at least 20 cm to heat sources such as radiators or cookers (see figure on page 3).
- Do not cover the air cleaner during operation.
- Do not use any chemicals for cleaning the device.
- Keep the openings (air inlet and outlet) free.
- Only operate the device on safe, solid and level ground.

- The appliance is for household use only.
- This appliance can be used by children aged from 8 years and above and persons with reduced physical, sensory or mental capabilities or lack of experience and knowledge if they have been given supervision or instruction concerning use of the appliance in a safe way and understand the hazards involved. Children shall not play with the appliance. Cleaning and user maintenance shall not be made by children without supervision.
- For details of cleaning and other user maintenance, please see section 12.
- If the supply cord is damaged, it must be replaced by the manufacturer, its service agent or similarly qualified persons in order to avoid a hazard.
-  This marking indicates that this product should not be disposed with other household wastes throughout the EU. To prevent possible harm to the environment or human health from uncontrolled waste disposal, recycle it responsibly to promote the sustainable reuse of material resources. To return your used device, please use the return and collection systems or contact the retailer where the product was purchased. They can take this product for environmental safe recycling.

Risk of injury and damage to property due to defective devices!

- Before each use of the device, check its accessories and connection parts for possible damages. Do not use any defective devices or device parts.
- Do not use the air cleaner if you detect any damage to its plug and cables. Defective power cables represent a serious health threat.

Danger to life through electrical shock!

- Only connect the air cleaner to power sources that are in good technical order. Do not use damaged wall outlets!
- Pull the connection cable out of the wall outlet by pulling it at its plug.
- Do not touch electrical connection cables when your hands are wet!
- Do not carry out any changes or repairs on the air cleaner!
- Do not expose the air cleaner to any liquids since it is not provided with a splash guard.
- Do not apply any liquids to the interior of the device. If this does happen nevertheless, pull out the power cord and have the air cleaner checked by a specialist workshop.

Risk of injury!

- Do not place any objects in the air inlet and air outlet of the device.
- Do not reach into the existing openings.
- Do not leave children unattended near the operating device!

5. Function and product characteristics

The air cleaner AirgoClean 105 S is used to filter room air in order to reduce minor to medium pollution and odours in the air and to improve the air quality this way.

It is equipped with a high-performance fan which sucks in the air on the

front side in order to clean it while it is flowing through a filter system before releasing it back into the room.

The device is provided with two filters that are located one after the other:

- Activated carbon filter (precleaning of the air and binding of odour particles)
- HEPA filter (Intensive cleaning, filter class H13). For more information, please visit our website www.trotec.de

A selection of two operating modes ensures that the device can be controlled both manually by the user as well as automatically with the support of the integrated sensor system. The dust sensor (DUST) as well as the sensor for the registration of volatile materials/gases VOC (Volatile Organic Compound) measure the degree of the air pollution and show the result on the display and/or by means of the light-emitting diodes designated for this purpose.

Apart from an operating panel on the device, the air cleaner is also equipped with a remote control. In order to put it into operation, you will require 2 AAA battery cells (battery or rechargeable battery).

The air cleaner is suitable for continuous operation.

It has been tested according to currently applicable technical standards and has been granted the GS label for certified safety.

6. Technical data

Parameter	Value
Electrical connection	230 V
Frequency	50 Hz
Power consumption	82 W
Air flow	253 m³/h
Operating range temperature	10 °C - 45 °C
Operating range humidity	10 % - 85 %
Sound pressure level (at distance of 1.5 m)	Setting 1: 53 dB Setting 2: 56 dB Setting 3: 62 dB
Width	409 mm
Depth	315 mm
Height	639 mm
Weight	7.3 kg
suitable room size	30 m² / 85 m³

7. Proper and improper use

Proper use

The AirgoClean 105 S has been developed for air cleaning purposes and may only be used indoors.

The model is suitable for the filtration of general air pollutants such as exhaust gases, allergens, mould spores, fine-dust particles and tobacco smoke. It can be used for mild to moderate degrees of pollution and is only intended for private use.

Any application deviating from the above-mentioned use is deemed inadmissible!

Improper use

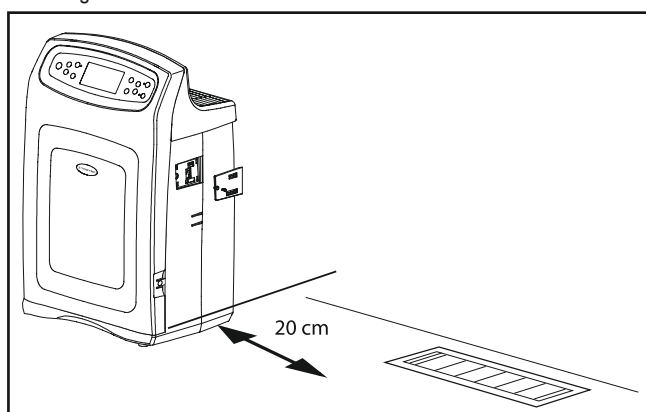
The device may not be used in rooms with high levels of dust formation, e.g. in production halls, workshops or on construction sites. Furthermore, the integrated filter system is not suitable for removing dusts that are potentially harmful to health (e.g. pollutants) from the air.

8. Installation conditions

When choosing the installation location of the air cleaner, a number of spatial and technical conditions must be taken into account. Any non-compliance may impair the functioning of the device and/or of the accessories or result in hazardous situations for people and property.

The following points are to be observed during installation:

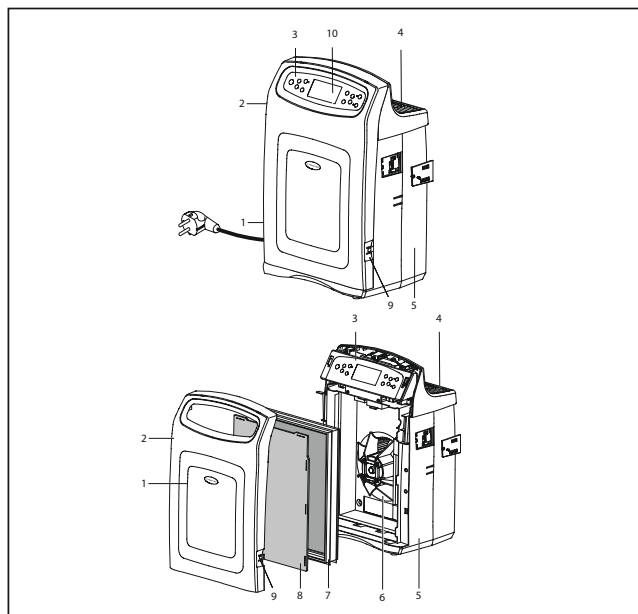
- The device may only be used indoors
- A minimum distance of at least 20 cm to heat sources must be observed (see figure)
- The relative air humidity at the installation location should not exceed 85 %
- The device must be standing upright and is to be placed on a solid and level surface
- Make sure that the inlet and outlet openings are not covered
- Choose a location that is not exposed to direct sunlight or heat
- The location of use may not exhibit excessive dust formation
- Use a wall outlet connected to a power supply of 230 V for operating the device



9. Description of device

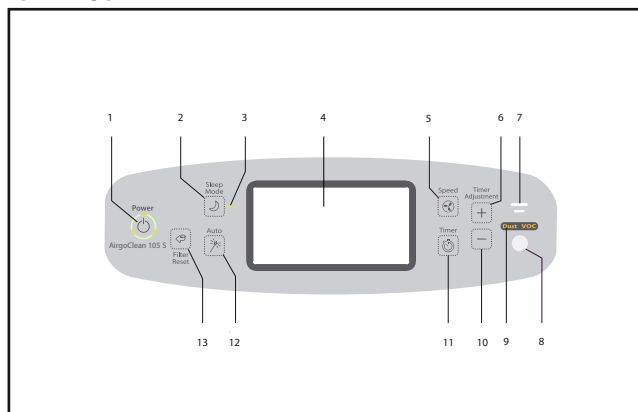
The AirgoClean 105 S consists of the following components:

Air cleaner



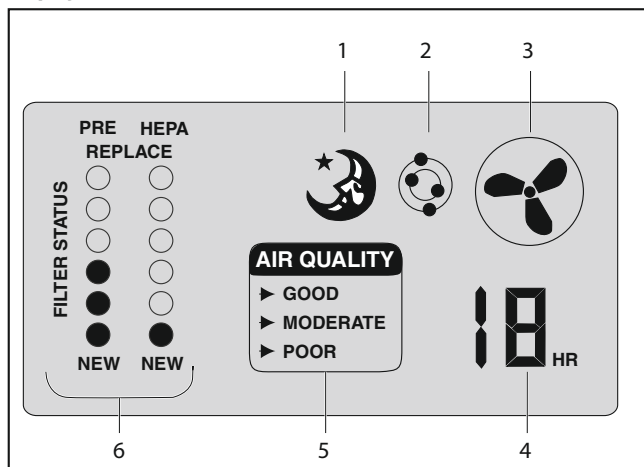
- | | |
|----------------------|---------------------------|
| 1 Air inlet | 6 Fan |
| 2 Front device cover | 7 HEPA filter |
| 3 Operating panel | 8 Activated carbon filter |
| 4 Air outlet | 9 Cover locking mechanism |
| 5 Housing | 10 Display |

Operating panel



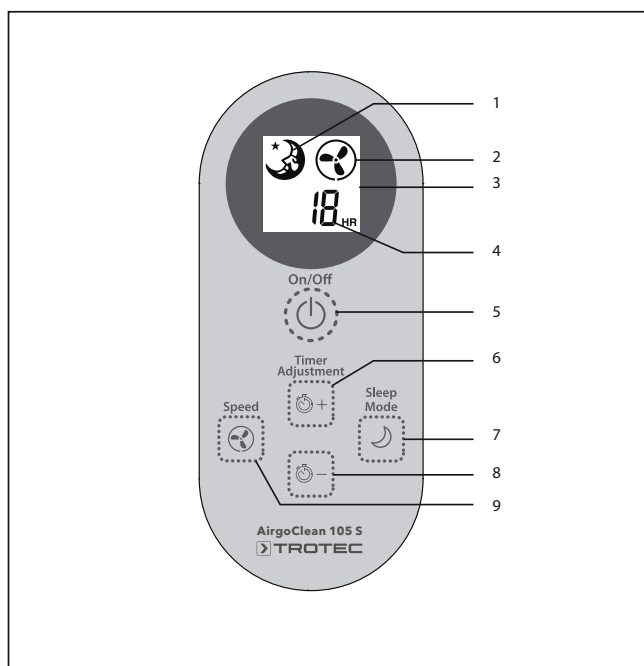
- | | |
|-------------------------------------|----------------------------------|
| 1 Power switch (On/Off) | 8 Remote control signal receiver |
| 2 "Sleep mode" button | 9 Sensor display ("Dust/VOC") |
| 3 "Sleep mode active" LED | 10 Time "-" button |
| 4 Display | 11 "Time selection" button |
| 5 Fan speed button | 12 "Auto mode" button |
| 6 Time "+" button | 13 Filter reset button |
| 7 Air inlet for dust and VOC sensor | |

Display



- | | |
|---------------------|------------------|
| 1 Sleep mode active | 4 Operating time |
| 2 VOC sensor active | 5 Air quality |
| 3 Fan speed | 6 Filter status |

Remote control



- | | |
|--------------------------|-----------------------|
| 1 Sleep mode active | 6 Time "+" button |
| 2 Fan speed | 7 "Sleep mode" button |
| 3 Display | 8 Time "-" button |
| 4 Operating time display | 9 "Speed" button |
| 5 Main switch (On/Off) | |

10. Installation and commissioning

- Check that the scope of delivery of your air cleaner is complete. If an accessory part is missing, please contact the Trotec customer service or the specialist dealer from whom you purchased the device.
- Check the air cleaner and its connection parts for possible damages.

- Place the device on a safe, level and stable surface. Make sure to comply with the requirements described in the chapter "Installation conditions".
- Connect the power supply cable to a properly secured mains socket (230 V/50 Hz/10 A).

The air cleaner is now ready for operation. Use the device according to the functions described in chapter 11 "Functions and operation".

11. Functions and operation

The air cleaner features two operating modes:

1. Manual mode

The different settings of the air cleaner can be set manually and according to your wishes.

2. Automatic mode

All settings of the air cleaner are automatically adjusted according to the room air quality measured by the integrated sensors.

You can choose between both operating modes by pressing the AUTO button (6) with the device switched on.

By default, the air cleaner will start in the MANUAL operating mode.

Switching on the air cleaner

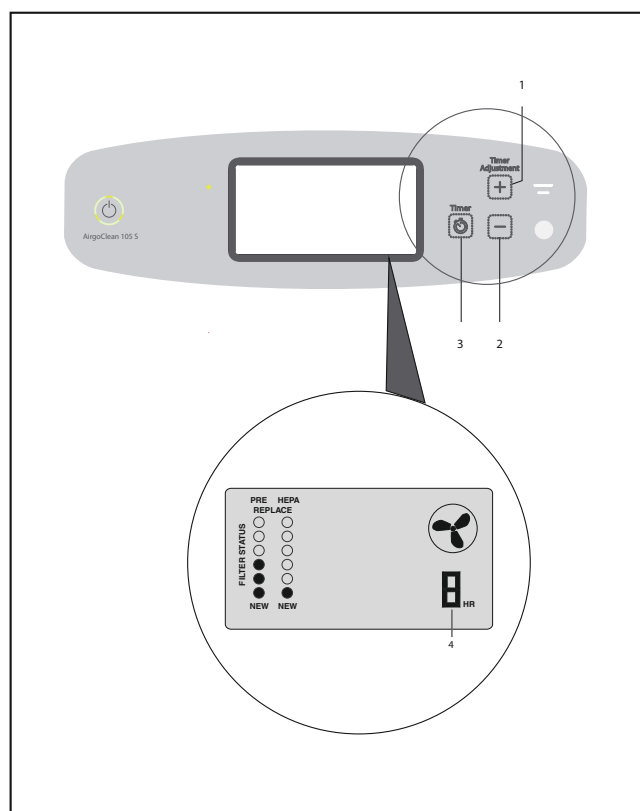
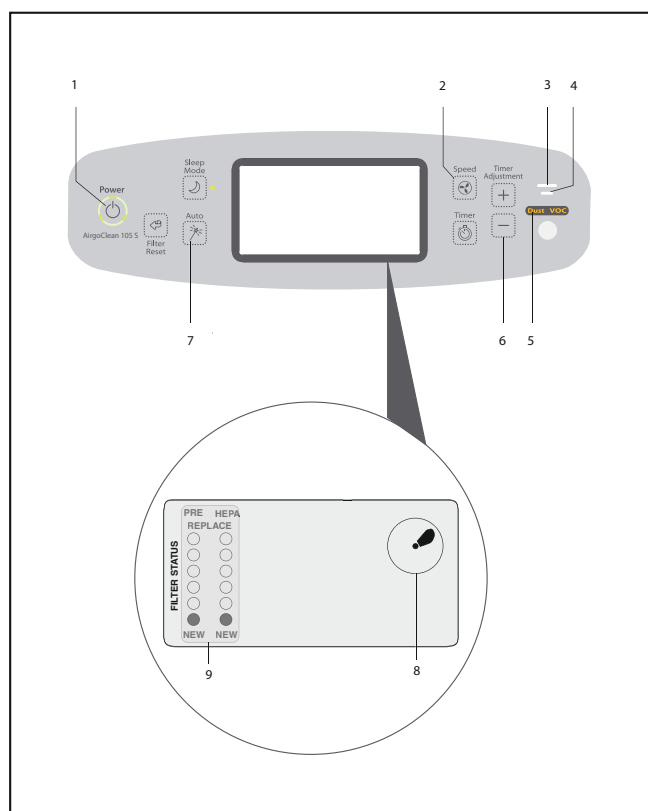
Switch on the device by pressing the ON/OFF button (1) on the operating panel or remote control once. The start screen will be displayed.

When switched on, the device will start on the lowest cleaning stage (stage 1), i.e. the fan is turning at the lowest speed (default setting). The air cleaner runs in continuous mode without any time limit. The start display shows the filter status (8) as well as the symbol for the fan speed (7).

When the device is switched on, the integrated DUST and VOC sensors (3) are activated. Depending on the measured air quality, the presence of dust and odour particles will be indicated by the lighting up of the corresponding display on the operating panel (4).

Switching off the air cleaner

Switch off the device by pressing the ON/OFF button (1) on the operating panel or remote control once.



Setting the operating time (timer function)

You have the possibility to set the operating time of the air cleaner, according to your wishes, for a time period of 1-18 hours. Once the selected time period has elapsed, the device will switch off automatically.

In order to adjust the settings, proceed as follows:

1. Press the **TIMER** button (3) on the operating panel of the air cleaner and/or one of the **TIME SELECTION** buttons on the remote control (default setting: 8 hours).
2. Set the desired operating time by means of the **TIME SELECTION** BUTTONS "+" and/or "-" (1 and 2).

The remaining operating time of the device is shown on the display (4).

Setting the sleep mode

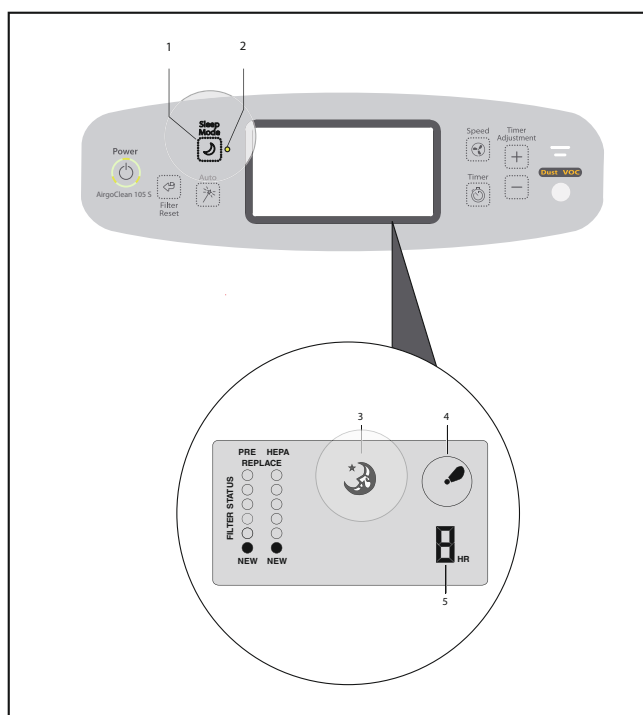
The device features a function that allows you to let the air cleaner run overnight – the **SLEEP MODE**.

In order to activate it, press the **SLEEP MODE** button (1) on the operating panel. If the function is active, a diode will light up up next to the operating panel (2).

The **MOON SYMBOL** (3) as well as the **OPERATING TIME** (5), that is set to 8 hours by default, will appear on the screen of the display. Once this time has elapsed, the device will switch off automatically.

You can use the "timer function" (see above) in order increase and/or reduce this time period.

In this mode, the fan will run at the lowest speed (4) by default.



Setting the fan speed

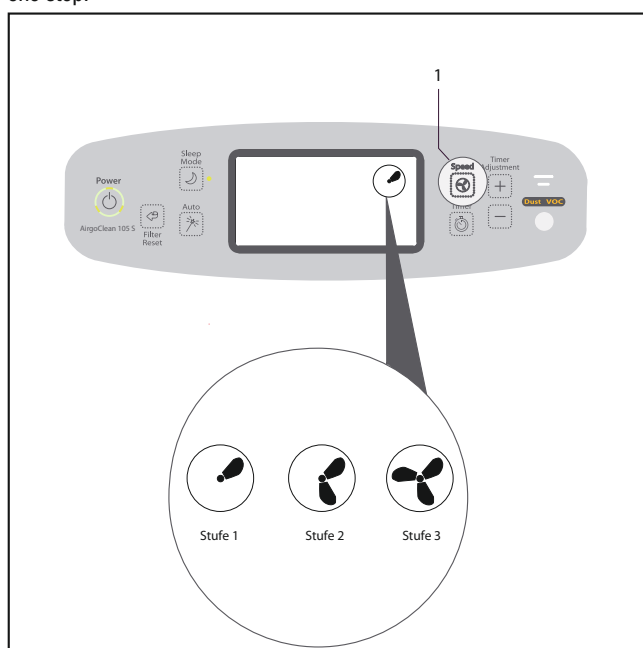
You can set the fan speed depending on the degree of air pollution.

You can choose between three speed settings.

- Setting 1: lowest and quietest setting
- Setting 2: medium setting and medium cleaning speed
- Setting 3: highest setting and maximum cleaning speed

By pressing the SPEED button (1), you can choose between the three possible speed settings.

When switched on, the air cleaner will start at the lowest speed setting. Each time the function key is pressed, the speed will be increased by one step.



Automatic mode

You can switch from MANUAL MODE to AUTOMATIC MODE.

For switching the mode, press the AUTO button (3) on the operating panel of the air cleaner.

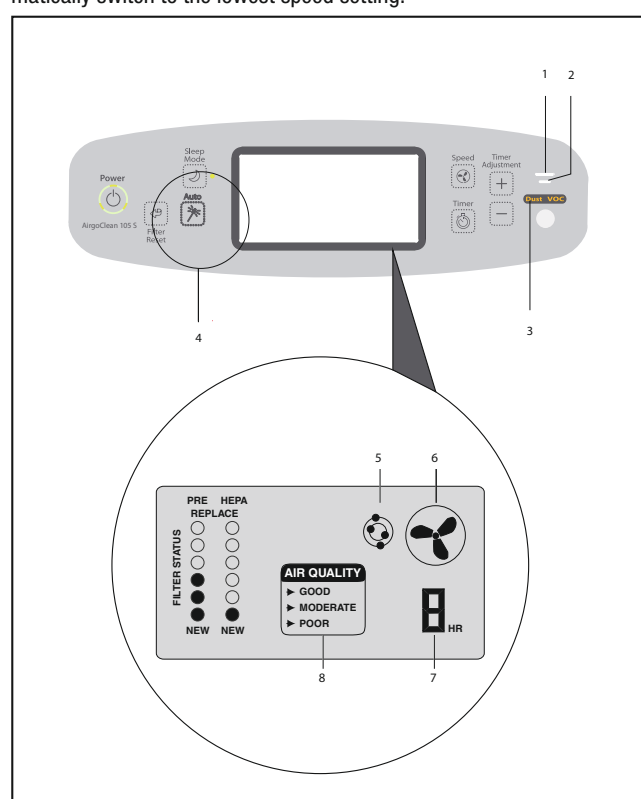
In addition to the standard indications of the manual mode, a field displaying the air quality measured by the sensors (1) will appear.

The possible quality levels are "POOR", "MODERATE" and "GOOD" (7).

If an odour pollution is detected by the VOC sensor, the corresponding symbol (4) will appear on the display and the corresponding indicator (2) will light up.

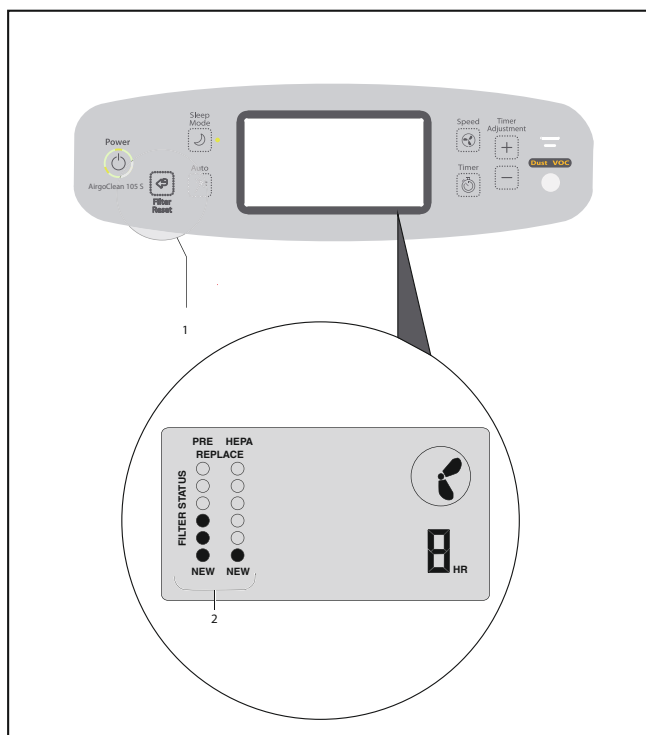
Depending on the measured room air quality, the device will automatically make the required settings for the fan speed (5).

If the highest quality level "GOOD" is reached, the air cleaner will automatically switch to the lowest speed setting.



Filter status

The filter status display of the activated carbon filter and HEPA filter (2) will show you when the filter must be replaced. The status display will gradually increase from "NEW" to "REPLACE". As the pollution increases, the corresponding level will increase as well. When the status "REPLACE" has been reached and the status display starts flashing, please replace the filter as described in the chapter "Care and maintenance".



12. Care and maintenance

Replacing the filters

In order to ensure the functionality and performance of the air cleaner in the long term, the existing filter system (activated carbon filter and HEPA filter) must be replaced in certain intervals.

Under normal conditions, please replace the HEPA filter once a year and the activated carbon filter every 3 months. This way, an optimal functioning of the device is guaranteed.

The FILTER STATUS indication shown on the display can also be used to read off the pollution degree of the filters. If the filter status display flashes, please replace the corresponding filter (see chapter "Filter status").

For information on filter types and sources of supply, please refer to the chapter "Replacement filters".



Danger to life through electrical shock!

Do not open the air cleaner as long as it is connected to the power supply.

Always pull out the power cord before opening the device!

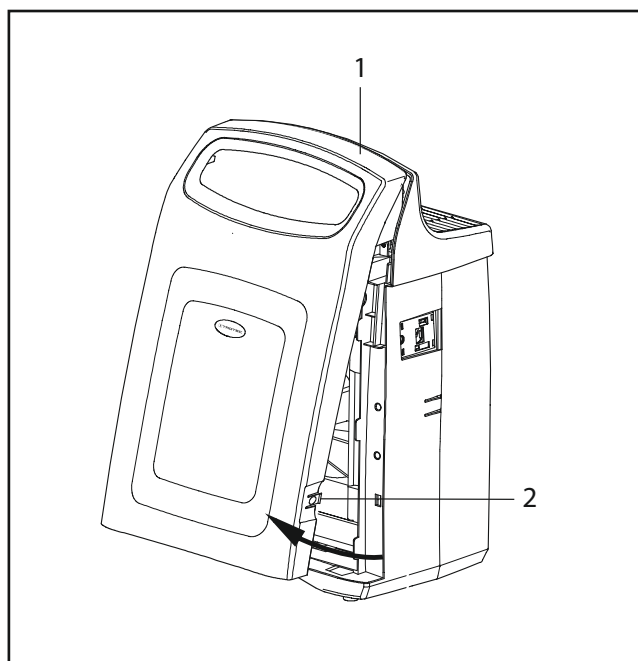
Proceed as follows to replace the filters:

1. Remove the cover (1) of the air cleaner

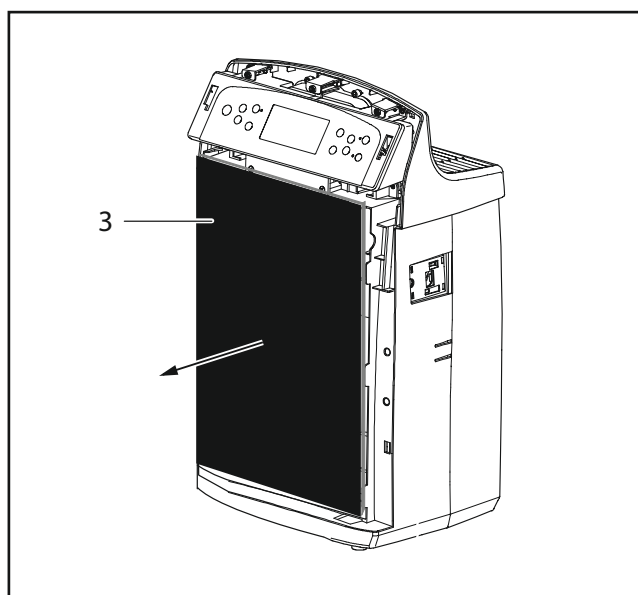
- Unlock the locking mechanism (2) on the left-hand and right-hand side by applying light pressure.
- Remove the cover by pulling it forward at the lower part.



When the front cover is removed, a safety switch is activated. In this state, any power supply that might still be connected is interrupted. The device cannot be operated.

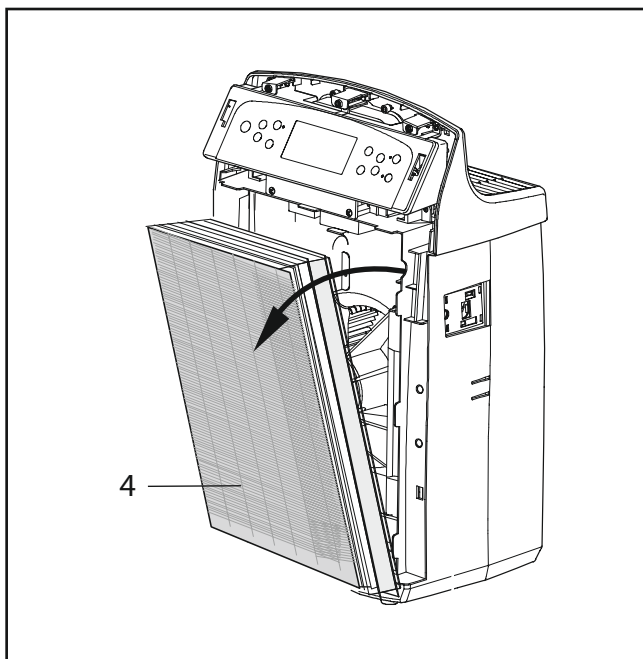


2. Remove the activated carbon filter (3).



3. Remove the HEPA filter (4).

- Grab the filter block by the recesses at the upper part of the inner frame.
- Remove the filter by pulling it upwards at a slight angle.

***Damage to the device due to improper cleaning!***

There is a risk of short circuits due to liquids entering or remaining in the air cleaner.

Do not use any liquids for cleaning!

Inserting the removed and/or replaced filters is done in reverse order.

4. You must now reset the filter status.

In order to reset the HEPA filter, press the filter reset button once. The status display will light up.

Then, press the filter reset button again for 5 seconds.

The timer for the HEPA filter will now reset.

In order to reset the activated carbon filter, press the filter reset button twice. The status display will light up.

Then, press the filter reset button again for 5 seconds.

The timer for the activated carbon filter will now reset.

Cleaning the activated carbon filter and the HEPA filter

The device features a function that permanently measures the degree of pollution and indicates it on the display. (see chapter "Functions and operation").

If the device registers the highest degree of pollution (level 6) and the filter status display is flashing, please replace the corresponding filter. When replacing the filter, proceed as described above.

The HEPA filter and activated carbon filter cannot be cleaned!

Once the highest degree of pollution has been reached, please replace the corresponding filter (see chapter "Replacement filters").

Cleaning the air cleaner

Clean the device using a dry, dust and lint free cloth. The device is only to be cleaned externally.

13. Troubleshooting

Problem	Cause	Error correction
Device does not work	Power supply is not connected.	Plug the plug into the socket.
	After filter replacement: the front cover is not completely closed or has been incorrectly inserted.	Remove the cover, insert it again and close it completely.
Weak air flow at the outlet opening	Filter dirty	Replace and/or clean the filter system.
Display does not work	The backlighting is defective.	Please contact the Trotec customer service or a specialist workshop.
The air cleaner is very loud	The device is standing on an uneven surface.	Place the device on an even and solid surface.
The remote control does not work	Batteries are empty.	Replace the batteries.
Level 6 of the filter status display (prefilter or HEPA filter) lights up	Filter is dirty	Replace the filter.

If the following problems occur, please switch off the air cleaner and contact the customer service or a specialist workshop before putting it into operation again:

- Device overheats shortly after being switched on
- Power cable and plug are getting hot
- Foreign bodies have reached the interior of the air cleaner (possible damages to the fast-running fan)



Danger to life through electrical shock!

Do not attempt to carry out modifications or repairs on the device. Any unauthorised modification may result in serious health consequences or even death. Have repairs carried out by a certified specialist workshop.

14. Replacement filters

If the filters must be replaced, please contact Trotec GmbH & Co. KG or your specialist dealer directly in order to purchase suitable filters.



Material damage caused by unsuitable replacement filters!

Do not use any replacement filters other than those indicated in this manual.

The following replacement filters are suitable for the use in your air cleaner:

Filter type	Article number
Activated carbon filter (prefilter)	7.160.000.540
HEPA filter	7.160.000.560

15. Disposal

Air cleaner

Electronic equipment may not be disposed of in the domestic waste, but must be correctly disposed of in accordance with the EUROPEAN PARLIAMENT directive 2002/96/EC of 27th January 2003 regarding used electrical and electronic equipment. Please dispose of this device according to the applicable legal regulations after its final decommissioning.

Filter

The activated carbon filter and the HEPA filter can be disposed of in the domestic waste.

Packaging

The packaging of the air cleaner consists of cardboard / paper and plastic. The materials must be disposed of in the designated containers according to the local regulations or at a recycling depot.

Batteries and rechargeable batteries

Rechargeable batteries should not be disposed of along with household waste. They may contain harmful substances. Please dispose of them at a specialised collection point, e.g. in shopping malls or at a recycling depot.

16. Service and repair

Before contacting our customer service in order to solve an existing technical problem, please try removing the error by following the instructions described in the chapter "Troubleshooting".

If you have any further questions regarding the functioning and operation of the air cleaner or if you wish to receive further information in the event of a claim or with regard to guarantee aspects, please do not hesitate to contact us at any time.

Please contact:

Trotec GmbH & Co KG

Grebbeener Straße 7

D-52525 Heinsberg

Tel.: +49 2452 962-400

Fax.: +49 2452 962-200

Email: info@trotec.de

www.trotec.de

Trotec GmbH & Co. KG

Grebbeener Str. 7
52525 Heinsberg
Deutschland

☎ +49 2452 962-0

☎ +49 2452 962-200

info@trotec.com

www.trotec.com