

feelspo't

smart LED bulb

User Manual

1. Add device

1.1. Download Smart Life app

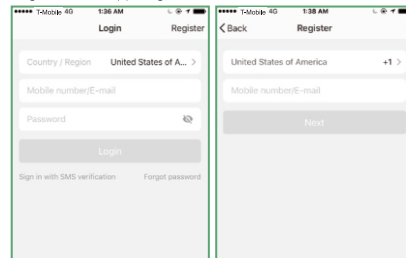
Please download Smart Life app first. Scan the QR Code for a download link, or download the Smart Life app from the App Store or Google Play Store.



Please scan the QR Code, or get Smart Life downloaded from App Store or Android Market.

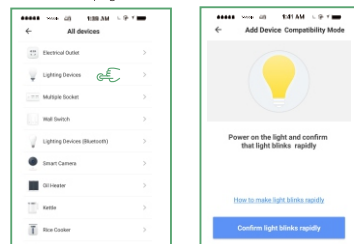
1.2. Register an account in Smart Life

Open the Smart Life app. On the account registration page, click "Register" in the upper right corner.



1.3. Add devices (for example, Smart Bulb)

After a successful login to the Smart Life app, click the button "+" on the top right corner of "My Home" page, or the "Add Device" button. Enter into the next page "Select Device Type", and then click the "All" button. Choose the "Lighting Devices" and then follow the instruction of the page to finish the connection.



The Smart Life app supports two types of distribution network modes:

EZ mode

The Smart LED Bulb is in a state of fast flashing. (Twice per second) (Turn on-off-on-off-on, into the EZ mode)

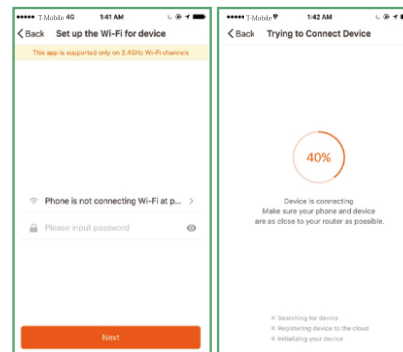
AP mode

The Smart LED Bulb is in a state of slow flashing. (Once every 2 seconds)

Note:

This device only supports 2.4G Network. If you open 5G network at the same time, please kindly close the 5G first. When you connect the bulb with your WiFi and mobile device, please keep them near the router for getting the stronger signal.

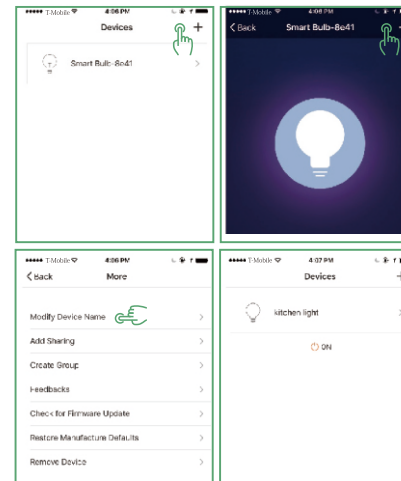
If the light is connection fails, please restart the router. If the router fails after restarting, please update the Smart Life app or select compatibility mode connection (AP mode).



Select the device via your Wi-Fi and enter the displayed pairing password, then start the configuration of the device.

1.4. Rename the added Smart LED Bulb

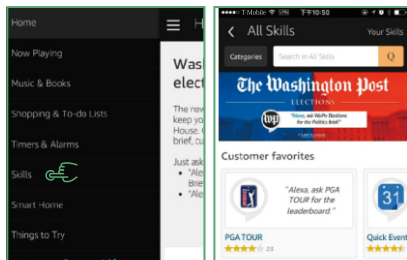
After the Smart LED Bulb is added successfully, click the device description text to modify device name. It is recommended to use a name comprised of easily pronounced words.



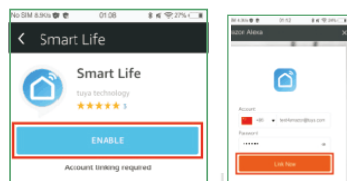
Multiple devices can be added and renamed according to the above procedures.

2. Enable Smart Life skill in the Amazon Alexa app

Choose "Skills" in the options bar, and then search "Smart Life" in the input box.



Select "Smart Life" in the search results, and then click "Enable Skill".



Then input the user name and password that you had previously registered with.

3. Control the Smart LED Bulb by Voice

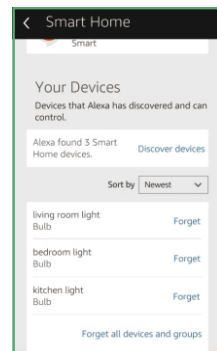
After step 2 is successful, you can control the bulb via Echo.

3.1. Discover devices

Firstly, you need to say to Echo:

- "Alexa (or Echo), Discover my devices."

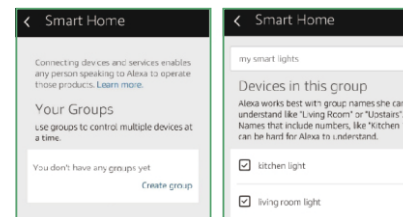
Echo will start searching for the devices which is added in the Smart Life app, it will take about 20 seconds, then it will tell you the result. You can also click "Discover devices" in the Alexa app. It will show the devices that were found successfully.



3.2. Control devices by voice

You can also group multiple Smart LED Bulbs and give instructions to control them together.

Note: The name of the device must be consistent with the addition of Smart Home app.



3.3. Support skill list

You can control the Smart LED Bulb by instructions like these:

- "Alexa (or Echo), turn on [bedroom light]"
Alexa (or Echo), turn off [bedroom light]
- "Alexa (or Echo), set [bedroom light] to 50 percent"
Alexa (or Echo), increase [bedroom light] to 50 percent
- "Alexa (or Echo), decrease [bedroom light] to 50 percent"
Alexa (or Echo), set [smart heater] to 34
- "Alexa (or Echo), raise [smart heater] by 4"
Alexa (or Echo), lower [smart heater] by 2

4. Link Smart Life to Google Home

You can invoke Smart Life by saying "Ok Google, talk to Smart Life" to your Google Home device.

When you hear the response voice from Google Home, you can check the link request on the homepage in the Google Home app. Tap "LINK" to direct to the account link page. Be noted that the country/region, the account, and the password must match with content in Step 1.2.

Then select the country that your Smart Life account belongs to, type in your Smart Life account and password, then tap LINK NOW.

5. Control your smart devices through Google Home

Now you can control your smart LED bulb through Google Home.

Invoke Smart Life by saying "Ok Google, talk to Smart Life" to Google Home, then you can use the following commands to control your devices (e.g., bedroom light):

Turn on/off bedroom light
Set bedroom light to 50 percent

Note: After the Smart Life is invoked, it will wait for your command all the time until you say "Cancel" or "Stop". You can also quit Smart Life by answering "Nothing" when it says "What can I do for you". Once you quit Smart Life, you need to invoke it again before you control smart devices through it.