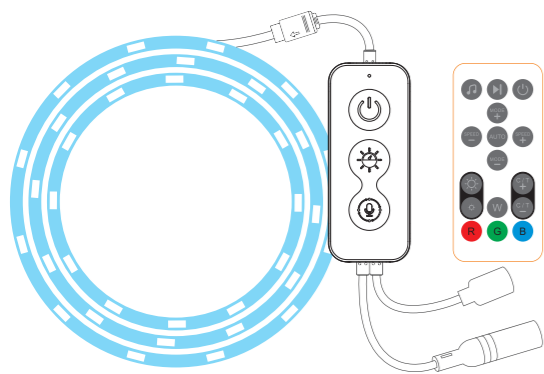


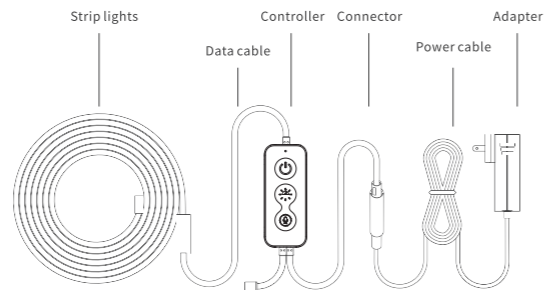
feelspo^t

USER MANUAL

WI-FI SMART LED STRIP LIGHTS USER MANUAL



Product Introduction



Remote

Features

RGB

This RGB LED strip lights kit has not only RGB(Red,Green, Blue),32 multicolored options,but also DIY selection to create your great led mood lighting.

MUSIC Reactive

Music synchronized LED strip lights shows in real-time.

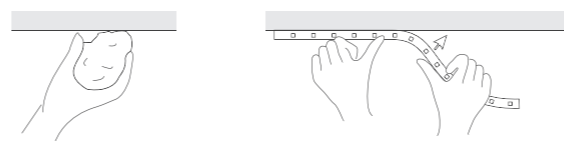
Remote APP Control

Remotely control strip lights via the APP.Put strip lights changing at your fingertips.

Voice Activated

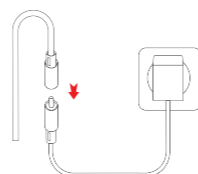
Works with Alexa and Google Assistant.Control strip lights by simple voice commands.

Installation Steps



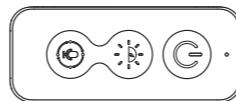
1.Please keep the surface dry, flat and smooth and ensure there is no dust or other foreign bodies which may affect the adhesive tape.

2.Stick to th installation surface.



3.Connect and plug in power supply.

Controlling By Control Box

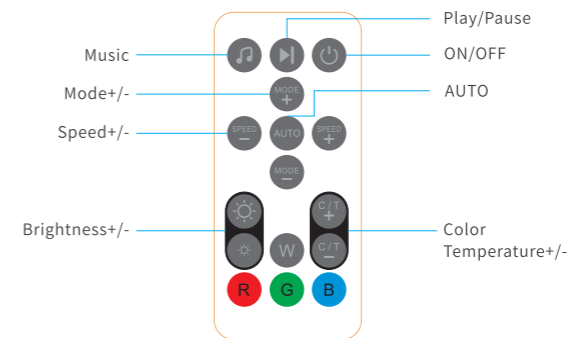


Power On/Off button:Short press to turn on/off the strip lights, long press 5 seconds,the LED controller will start Wi-Fi config

Music Bright/speed ajustment: Short press to switch speed circularly, long press to switch bright circularly.

Music/Mode/Scene adjustment: Short press to switch the scene circularly; double press to switch the mode between the static / pre-set / custom / music circularly; long press to enter in/exit out music mode.

Controlling By Remote



ON/OFF	Click to turn the strip lights on/off.
Music	Click to enter music mode.
Play/Pause	Click to play or pause.
AUTO	Click to enter automatic scene mode.
SPEED+/-	Adjust the performing speed in scene mode.
MODE+/-	Adjust the scene mode.
Brightness+/-	Click to adjust the brightness of strip lights.
Color Temperature+/-	Click to change 32 preset colors circularly in color mode or change 12 preset temperature in white mode circularly.
RGBW	Click to switch to corresponding color.R for red, G for green,B for blue,W for white.

Setting the APP

Step 1:

Scan the QR Code or search "Smart Life" or "Tuya Smart" on App store or Google Play to download and install the APP for iOS / Android.

The mobile phone system version needs to be Android 5.0 and iOS 9.0 or above.



Step 2:

Run "Smart Life" or "Tuya Smart" app on your phone, then tap "sign up" to create an account with Email address (if you already had one, please log in), and verify your account with verification code which has sent to your email.

Step 3:

Log in your account and follow the App instructions to create a "Family" and later follow below instructions to add devices to your "Family".

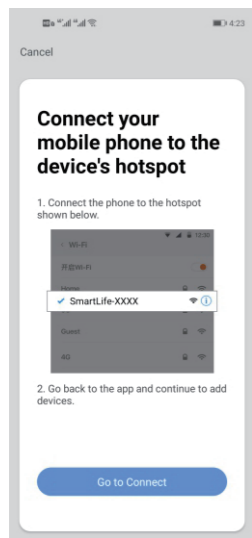
Quick Mode Configuration(EZ mode)

- 1.Before connecting, please make sure your smart phone is connecting with your home Wi-Fi (2.4GHz) successfully.
- 2.To connect in EZ mode, the strip lights needs to be set to blinks rapidly. (You can learn the detailed instruction on "How to set light as rapidly flashing" section).

3. Open APP and click "+" to add device.
4. Follow the in-APP instructions to connect the strip lights to your Wi-Fi network, Please note the device only works at 2.4GHz Wi-Fi.
5. Once connected, the APP will prompt the connection. Then click "Completed".
6. Now you can control the Strip lights through the APP.

AP (Access Point) Mode Configuration

1. Before connecting, please make sure your smart phone is connecting with your home Wi-Fi (2.4GHz) successfully.
2. To connect in AP mode, the strip lights needs to be set to blinks slowly. (You can learn the detailed instruction on "How to set light as slowly flashing" section)



3. Click the ICON "+" at the top right corner of the APP.
4. Select device type and click AP mode to add device.
5. Go to Wi-Fi setting in your smart phone and select the "Smart Life-XXX" for your Wi-Fi.
6. Once connected successfully, the APP will prompt the connection, and click "Completed"

How to set light as rapidly flashing (EZ Mode)

Method 1

Step 1 Power on device



Step 2 Turn off-on-off-on-off-on



Step 3 Confirm LED Strip is now rapidly flashing

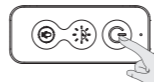


Method 2

Step 1 Power on device



Step 2 Hold the power button for 5S



Step 3 Confirm LED Strip is now rapidly flashing



How to set light as slowly flashing (AP Mode)

Method 1

Step 1 Power on device



Step 2 Turn off-on-off-on-off-on



Step 3 Confirm LED Strip is now rapidly flashing



Step 4 Operate again: Turn off-on-off-on-off-on until light is slowly flashing

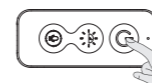


Method 2

Step 1 Power on device



Step 2 Hold the power button for 5S



Step 3 Confirm LED Strip is now rapidly flashing



Step 4 Operate again: Hold the power button for 5S until light is slowly flashing



How to connect strip lights to Amazon Alexa / Google Assistant

You can learn the detailed instruction on "Me->More Services" page of the APP. Tap the corresponding service to learn more and how to set up.

