

feelspo^t

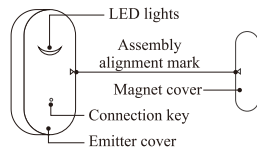
Wi-Fi

Door Magnetic Detector

FS-DS02W

Operation Instructions

Product Diagram



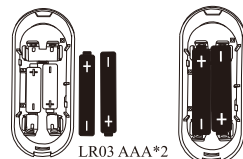
Install

1. Way for battery installation

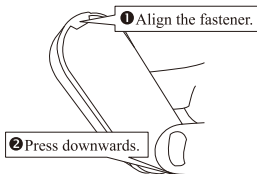
① Open the rear cover of the emitter.



② Insert the battery. ③ End of battery installation.



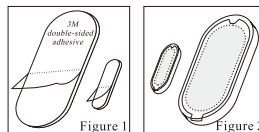
④ Close the rear cover.



2.3M glue fixing

① Tear off each side of release paper onto foam glue, and attach two foam glues respectively onto the fixing surfaces of the emitter and the magnetic stripe (as shown in Figure 1).

② Tear off the release paper on the back of the remitter and the magnetic stripe and attach it at the installation position of a door or a window (as shown in Figure 2).



Mobile APP

1. Download APP.



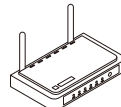
Tuya Smart

Smart Life

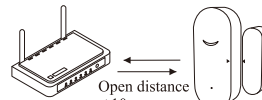
➤ Scan QR code to download.
➤ Please go to the application market to download "Tuya Smart (Smart Life)".

2. Precautions before connecting your phone.

① WiFi frequency.



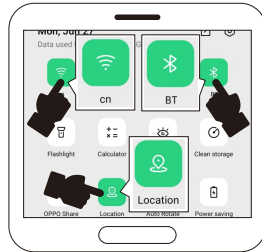
② Effective distance between router and gate magnet.



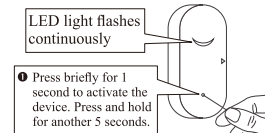
⚠ The door magnet is too far from the router to connect to the phone.

3. Connect to phone.

① Connect mobile WiFi / turn on BT / locate.



② Operating the product.

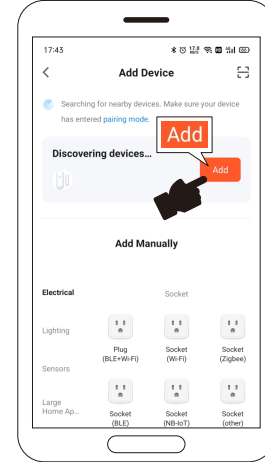


LED light flashes continuously

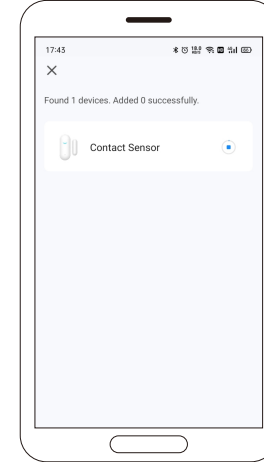
③ Open the APP and click "Add Device".



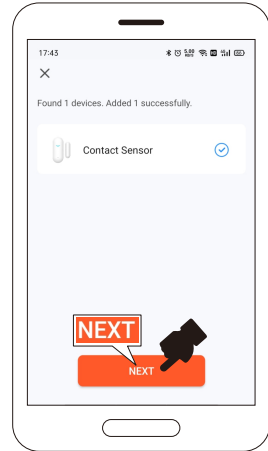
④ Discover the device, click "Add".



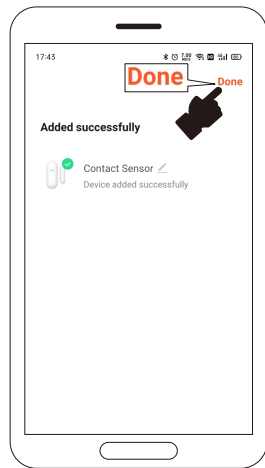
⑤ Show adding.



⑥ The addition is complete, click "Next".

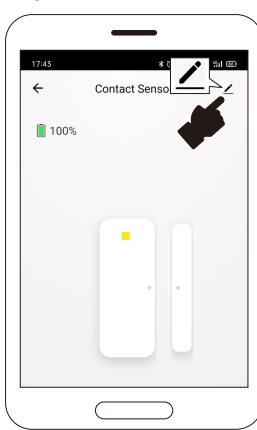


⑦ Click "Done".

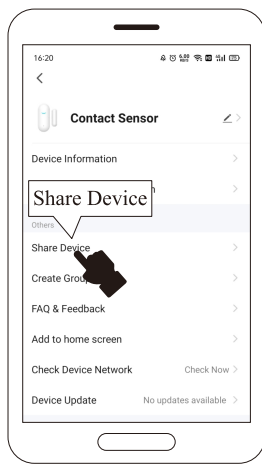


Share Device

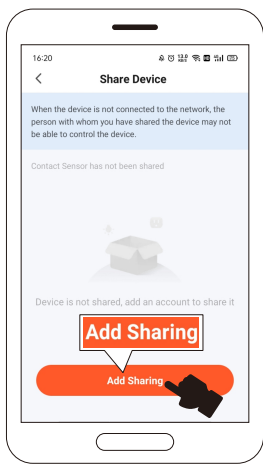
① Open the APP interface and click



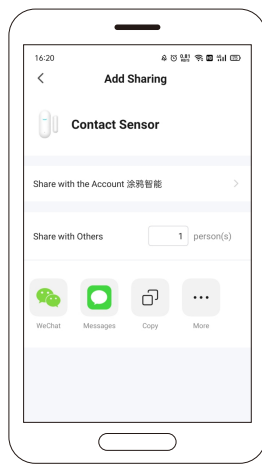
② Click "Share Device".



③ Click "Add Sharing".



④ Choose how to share.

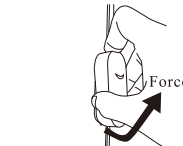


Maintenance

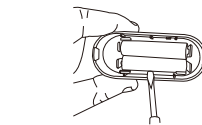
1. Change the batteries.

Battery lower power warning:
When the battery power is lower than 20%, the APP will warn that the battery needs to be replaced.

① Remove the outer casing.

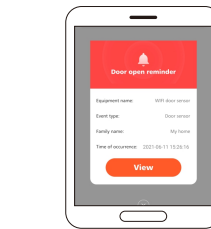
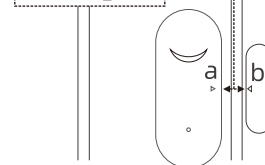


② Use a screwdriver to take out the battery from the side.



Test Alarm

⚠ ab shall not exceed $\geq 0.7\text{cm}$



Specifications

Working voltage: DC3V(LR03AAA*2)
Static current: 30uA
Transmitting current: 35mA
WiFi: IEEE 802.11 b/g/n 2.4G
Alarm output: Open door reminder,
Closing reminder, Low battery warning