



ENERGY-SAVING HOUSEHOLD  
VENTILATION EQUIPMENT

climtec.ua



2024



# RD series

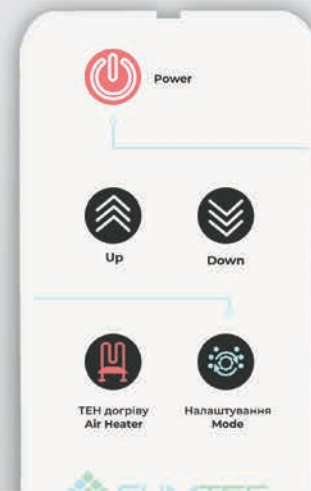
**Affordable  
and tested by time!**

**Diode indication  
of modes and speeds**

**Remote  
or manual control**

**Air heater**

**Airflow shut-off valves**



CLIMATE



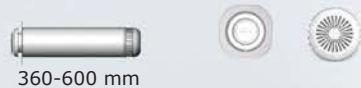
## series **RD**

---

The Climtec recuperator removes exhaust air from the premise, keeping it warm in winter or cool in hot weather, while filling it with fresh air from the street. At the same time, the air flows do not mix, but move in different channels of the heat exchanger. Thanks to this, the temperature is transferred from exhaust air to supply air (heat recovery). Due to this, energy recovery efficiency of up to 93% is ensured.



## RD series product range



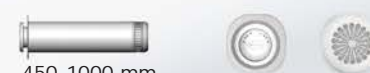
360-600 mm



360-600 mm



450-1000 mm



450-1000 mm

### Recuperator RD 100 base

Diameter of the working module without insulation, mm	100
Diameter of the mounting hole, mm	112
Voltage, V	220/230
Airflow shut-off valve	Manual
Supply/exhaust air volume, m <sup>3</sup> /h max	40/40
Air filter	option
Efficiency, %	up to 93
Air heater, W/h	-

### Recuperator RD 100 Standard

Diameter of the working module without insulation, mm	100
Diameter of the mounting hole, mm	112
Voltage, V	220/230
Airflow shut-off valve	Automatic
Supply/exhaust air volume, m <sup>3</sup> /h max	40/40
Air filter	+
Efficiency, %	up to 93
Air heater, W/h	-

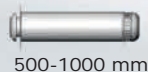
### Recuperator RD 125 Base

Diameter of the working module without insulation, mm	125
Diameter of the mounting hole, mm	142
Voltage, V	220/230
Airflow shut-off valve	Manual
Supply/exhaust air volume, m <sup>3</sup> /h max	60/60
Air filter	option
Efficiency, %	up to 93
Air heater, W/h	-

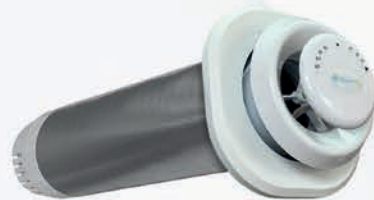
### Recuperator RD 125 Standard

Diameter of the working module without insulation, mm	125
Diameter of the mounting hole, mm	142
Voltage, V	220/230
Airflow shut-off valve	Automatic
Supply/exhaust air volume, m <sup>3</sup> /h max	60/60
Air filter	+
Efficiency, %	up to 93
Air heater, W/h	+

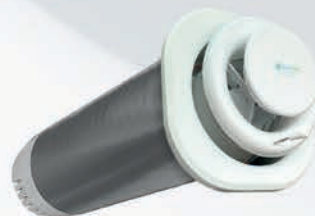




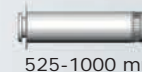
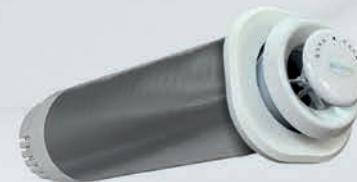
500-1000 mm



500-1000 mm



525-1000 mm



525-1000 mm



## Recuperator RD 150 Base

Diameter of the working module without insulation, mm	150
Diameter of the mounting hole, mm	162
Voltage, V	220/230
Airflow shut-off valve	Manual
Supply/exhaust air volume, m <sup>3</sup> /h max	100/100
Air filter	option
Efficiency, %	up to 93
Air heater, W/h	-

## Recuperator RD 150 Standard

Diameter of the working module without insulation, mm	150
Diameter of the mounting hole, mm	162
Voltage, V	220/230
Airflow shut-off valve	Automatic
Supply/exhaust air volume, m <sup>3</sup> /h max	100/100
Air filter	+
Efficiency, %	up to 93
Air heater, W/h	+

## Recuperator RD 200 Base

Diameter of the working module without insulation, mm	200
Diameter of the mounting hole, mm	225
Voltage, V	220/230
Airflow shut-off valve	Manual
Supply/exhaust air volume, m <sup>3</sup> /h max	185/185
Air filter	option
Efficiency, %	up to 93
Air heater, W/h	-

## Recuperator RD 200 Standard

Diameter of the working module without insulation, mm	200
Diameter of the mounting hole, mm	225
Voltage, V	220/230
Airflow shut-off valve	Automatic
Supply/exhaust air volume, m <sup>3</sup> /h max	185/185
Air filter	+
Efficiency, %	up to 93
Air heater, W/h	+

## RD series product range



525-1000 mm



525-1000 mm

**An example of recuperator RD 200+  
with an extension adapter for thin walls**

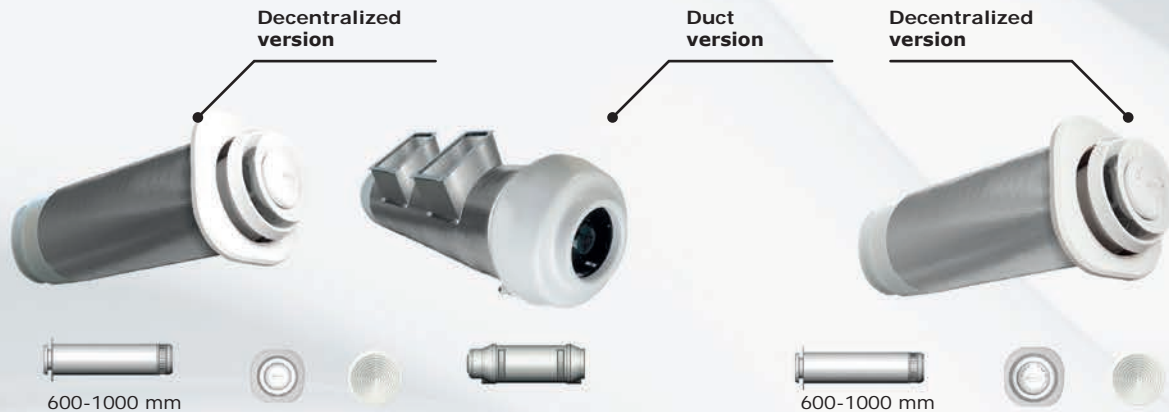
### Recuperator RD 200+ Base

Diameter of the working module without insulation, mm	200
Diameter of the mounting hole, mm	225
Voltage, V	220/230
Airflow shut-off valve	Manual
Supply/exhaust air volume, m <sup>3</sup> /h max	240/240
Air filter	option
Efficiency, %	up to 93
Air heater, W/h	-

### Recuperator RD 200+ Standard

Diameter of the working module without insulation, mm	200
Diameter of the mounting hole, mm	225
Voltage, V	220/230
Airflow shut-off valve	Automatic
Supply/exhaust air volume, m <sup>3</sup> /h max	240/240
Air filter	+
Efficiency, %	up to 93
Air heater, W/h	+





## Supply and exhaust ventilation unit RD 300 Base

Diameter of the working module without insulation, mm	250
Diameter of the mounting hole, mm	300
Voltage, V	220/230
Supply/exhaust air volume, m <sup>3</sup> /h max	600
Efficiency, %	up to 87

## Supply and exhaust ventilation unit RD 300 standard

Diameter of the working module without insulation, mm	250
Diameter of the mounting hole, mm	300
Voltage, V	220/230
Supply/exhaust air volume, m <sup>3</sup> /h max	600
Efficiency, %	до 87
Air heater, W/h	600

# RD Series

LED indication  
modes and speeds

Remote  
or manual control

Air heater

Valves  
overlapping  
flows



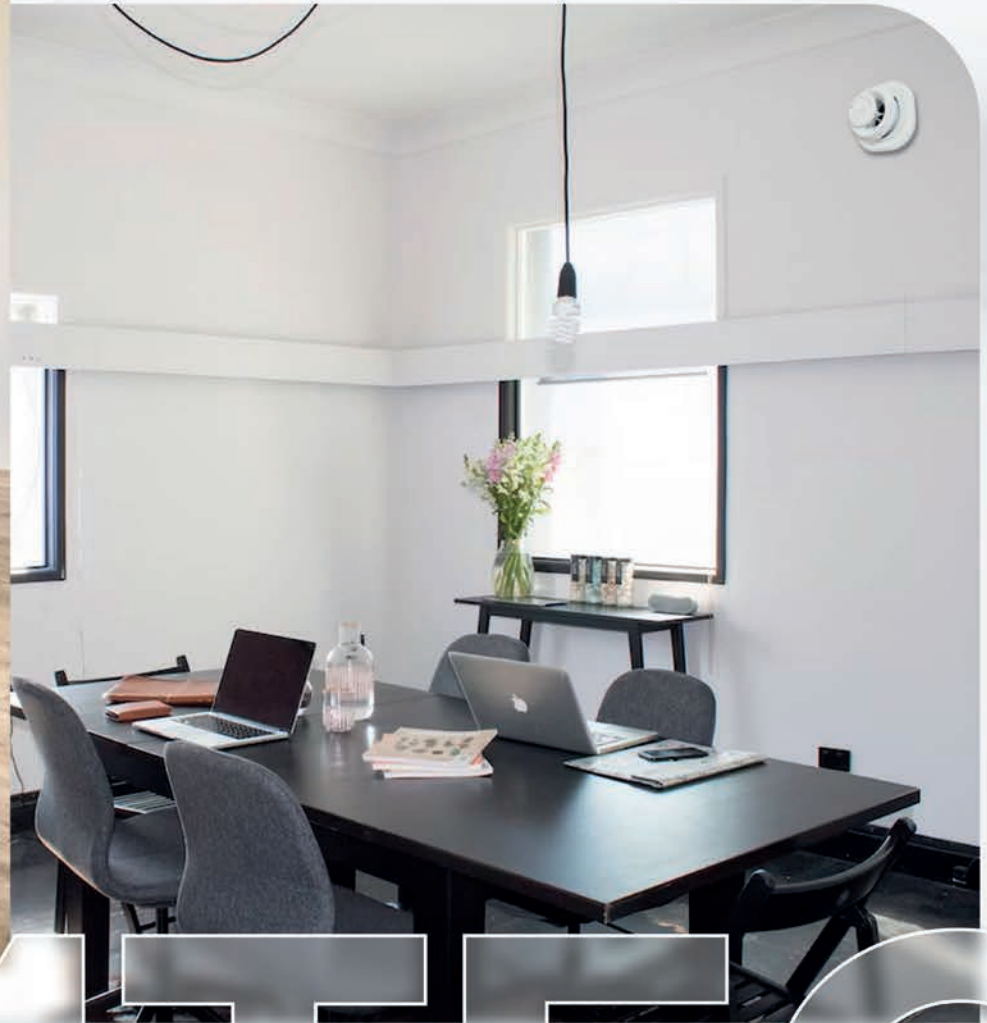








CHARTER



## Specifications RD

Parameters	RD 100		RD 125		RD 150		RD 200		RD 200+		RD 300	
	Base	Standard	Base	Standard	Base	Standard	Base	Standard	Base	Standard	Base	Standard
Diameter of the working module without insulation, mm	100	100	125	125	150	150	200	200	200	200	250	250
Diameter of the mounting hole, mm	112	112	142	142	162	162	225	225	225	225	270	270
Length, mm	360-600	360-600	450-1000	450-1000	500-1000	500-1000	525-1000	525-1000	525-1000	525-1000	600-1000	600-1000
Front panel size (WxHxD), mm	165x165x65	165x165x55	190x190x75	190x190x75	215x215x75	215x215x75	265x265x85	265x265x85	265x265x85	265x265x85	330x330x80	330x330x80
Weight, kg	2	2	2	2.2	3.5	3.7	5.1	5.3	5.4	6	8	8
Efficiency, %	up to 93	up to 93	up to 93	up to 93	up to 93	up to 93	up to 93	up to 93	up to 93	up to 93	до 87	до 87
Supply/exhaust air volume at maximum power, m³/h	40/40	40/40	60/60	60/60	100/100	100/100	185/185	185/185	240/240	240/240	600/600	600/600
Supply/exhaust air volume at minimum power, m³/h	-	10/10	-	15/15	25/25	25/25	45/45	45/45	60/60	60/60	150/150	150/150
Recommended area of the premise, up to m² at h=2.7m	15	15	25	25	40	40	70	70	90	90	100	100
Recommended number of people in the premise, up to	2	2	4	4	5	5	6	6	8	8	10	10



[illegible]

# Quattro series

**Classic  
and genuine**

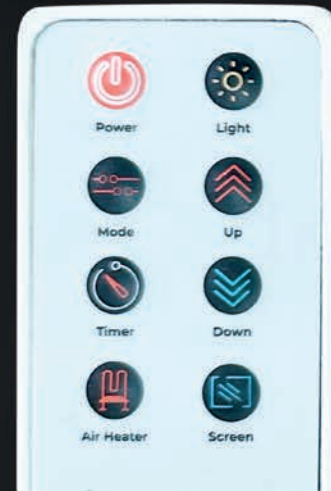


**NATURAL WOOD**

**LED lighting**

**Time indication**

**Wi-Fi, sensor system**  
( $t^{\circ}$ ,  $CO_2$ , humidity)







series

# Quattro

A new series of Climtec recuperators that combines ECO materials and modern technologies. The stylish design of the recuperator allows you to fit it into any interior. A feature of the Quattro series recuperators is the front distribution module made of natural wood and possibility of controlling the recuperator using a mobile application. Quattro recuperators are available in Standard and Profi configurations, in three basic colors: natural wood, gray and white. Our additional extended color palette is also present.

## Product range Quattro



320-600 mm



320-600 mm



410-1000 mm



410-1000 mm

### Recuperator Quattro 100 Standard

Diameter of the working module without insulation, mm	100
Diameter of the mounting hole, mm	112
Voltage, V	220/230
CO <sub>2</sub> sensor	Option
Supply/exhaust air volume, m <sup>3</sup> /h max	40/40
Air humidity sensor	+
Control via mobile application	-
Efficiency, %	up to 93

### Recuperator Quattro 100 Profi

Diameter of the working module without insulation, mm	100
Diameter of the mounting hole, mm	112
Voltage, V	220/230
CO <sub>2</sub> sensor	+
Supply/exhaust air volume, m <sup>3</sup> /h max	40/40
Air humidity sensor	+
Control via mobile application	+
Efficiency, %	up to 93

### Recuperator Quattro 125 Standard

Diameter of the working module without insulation, mm	125
Diameter of the mounting hole, mm	142
Voltage, V	220/230
CO <sub>2</sub> sensor	Option
Supply/exhaust air volume, m <sup>3</sup> /h max	60/60
Air humidity sensor	+
Control via mobile application	-
Efficiency, %	up to 93

### Recuperator Quattro 125 Profi

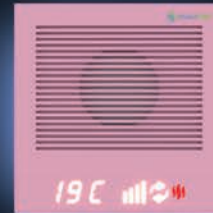
Diameter of the working module without insulation, mm	125
Diameter of the mounting hole, mm	142
Voltage, V	220/230
CO <sub>2</sub> sensor	+
Supply/exhaust air volume, m <sup>3</sup> /h max	60/60
Air humidity sensor	+
Control via mobile application	+
Efficiency, %	up to 93



460-1000 mm



460-1000 mm



480-1000 mm



480-1000 mm

## Recuperator Quattro 150 Standard

Diameter of the working module without insulation, mm	150
Diameter of the mounting hole, mm	162
Voltage, V	220/230
CO <sub>2</sub> sensor	Option
Supply/exhaust air volume, m <sup>3</sup> /h max	100/100
Air humidity sensor	+
Control via mobile application	-
Efficiency, %	up to 93

## Recuperator Quattro 150 Profi

Diameter of the working module without insulation, mm	150
Diameter of the mounting hole, mm	162
Voltage, V	220/230
CO <sub>2</sub> sensor	+
Supply/exhaust air volume, m <sup>3</sup> /h max	100/100
Air humidity sensor	+
Control via mobile application	+
Efficiency, %	up to 93

## Recuperator Quattro 200+ Standard

Diameter of the working module without insulation, mm	200
Diameter of the mounting hole, mm	225
Voltage, V	220/230
CO <sub>2</sub> sensor	Option
Supply/exhaust air volume, m <sup>3</sup> /h max	185/185
Air humidity sensor	+
Control via mobile application	-
Efficiency, %	up to 93

## Recuperator Quattro 200+ Profi

Diameter of the working module without insulation, mm	200
Diameter of the mounting hole, mm	225
Voltage, V	220/230
CO <sub>2</sub> sensor	+
Supply/exhaust air volume, m <sup>3</sup> /h max	185/185
Air humidity sensor	+
Control via mobile application	+
Efficiency, %	up to 93



# Quattro series

Natural  
wood

LED lighting

Time indication

Wi-fi, sensors  
(t°, CO<sub>2</sub>, humidity)



Quattro color palette  
Bedrooms and living rooms

Choose a color for your  
**design**

RAL 7047  
Телегей 4

CMYK (C)  
0 0 5 20

CMYK (U)  
0 0 0 12

RAL 9001  
Кремово-белый

CMYK (C)

0 0 10 5

CMYK (U)  
0 0 10 0

RAL 9010  
Белый

CMYK (C)  
0 0 5 0

CMYK (U)  
0 0 7 0

RAL 1015  
Светлая  
слоновая  
кость

CMYK (C)  
0 5 30 10

CMYK (U)  
10 10 20 0





Quattro color palette  
Bedrooms and living rooms

Create your own unique  
**interior**

RAL 6009  
Ялицевий зелений

CMYK (C)  
90 50 90 60

CMYK (U)  
100 60 80 60

RAL 3007  
Чорно-червоний

CMYK (C)  
60 100 70 80

CMYK (U)  
50 100 90 40

RAL 7024  
Графітовий сірий

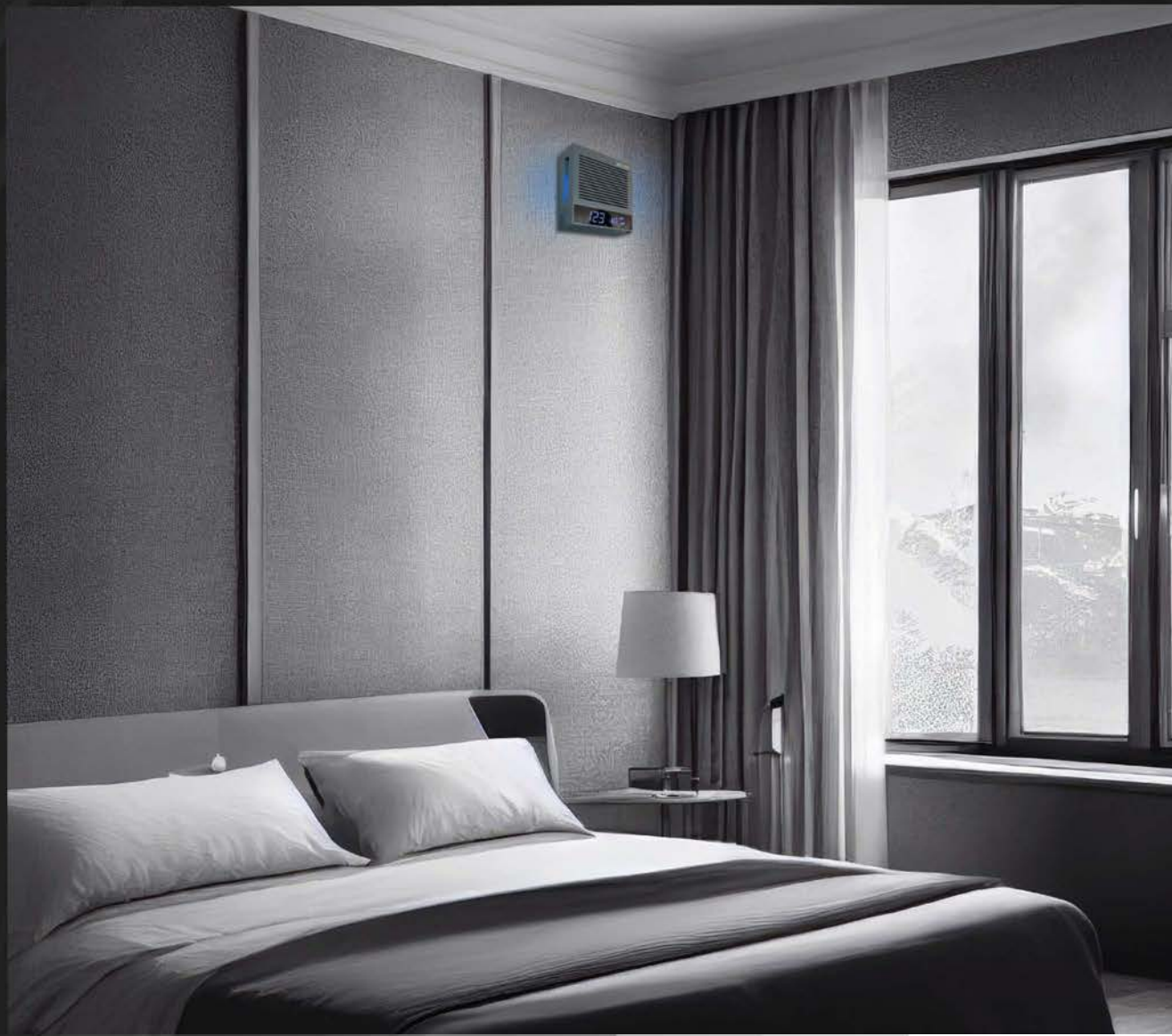
CMYK (C)  
80 60 50 40

CMYK (U)  
90 60 30 60

RAL 7022  
Сіра умбра

CMYK (C)  
30 20 40 80

CMYK (U)  
80 80 100 75



Quattro color palette  
Children's rooms

# Using a wide palette

RAL 6019  
Біло-зелений

CMYK (C)  
35 0 40 0

CMYK (U)  
30 0 30 0

RAL 3015  
Світло рожевий

CMYK (C)  
0 50 20 10

CMYK (U)  
10 40 10 0

RAL 5024  
Пастельно-синій

CMYK (C)  
70 20 10 20

CMYK (U)  
63 17 7 8

RAL 4010  
Телемагента

CMYK (C)  
10 90 30 0

CMYK (U)  
0 100 0 0





## Quattro interior samples



Quattro interior samples



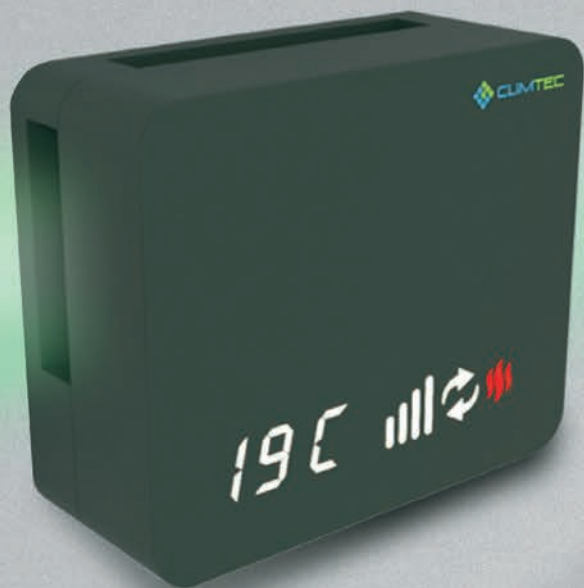
Quattro specifications

Parameters	Quattro 100		Quattro 125		Quattro 150		Quattro 200+	
	Standard	Profi	Standard	Profi	Standard	Profi	Standard	Profi
Diameter of the body of the working module without insulation, mm	100	100	125	125	150	150	200	200
Diameter of the mounting hole, mm	112	112	142	142	162	162	225	225
Length, mm	320-600	320-600	410-1000	410-1000	460-1000	460-1000	480-1000	480-1000
PFront panel size (WxHxD), mm	210x210x59	210x210x59	210x210x59	210x210x59	280x280x59	280x280x59	280x280x59	280x280x59
Weight, kg	2.5	2.5	2.5	2.7	4	4.2	7	7
Efficiency, %	up to 93	up to 93	up to 93	up to 93	up to 93	up to 93	up to 93	up to 93
Supply/exhaust air volume at maximum power, m³/h	40/40	40/40	60/60	60/60	100/100	100/100	185/185	185/185
Supply/exhaust air volume at minimum power, m³/h	10/10	10/10	25/25	25/25	45/45	45/45	60/60	60/60
Recommended area of the premise, up to m² h=2.7 m	15	15	25	25	40	40	90	90
Recommended number of people in the premise, up to	2	2	4	4	5	5	8	8
Voltage, V	220/230	220/230	220/230	220/230	220/230	220/230	220/230	220/230
Electric power input of the fan drive, W	6	6	7	7	24,5	24	48	46
Power consumption of air heater, W/h	40	40	40	40	100	100	300	300
Sound power level (LWA) at min/max speed, dB	22/32	22/32	26/38	26/38	26/38	26/38	22/32	22/32



Parameters	Quattro 100		Quattro 125		Quattro 150		Quattro 200+	
	Standard	Profi	Standard	Profi	Standard	Profi	Standard	Profi
Aluminum plate cross flow heat exchanger	+	+	+	+	+	+	+	+
Airflow shut-off valve	Automatic	Automatic	Automatic	Automatic	Automatic	Automatic	Automatic	Automatic
Information LED panel	+	+	+	+	+	+	+	+
Air filter (G3)	+	+	+	+	+	+	+	+
CO <sub>2</sub> sensor	option	+	option	+	option	+	option	+
Supply air temperature sensor	+	+	+	+	+	+	+	+
Outside air temperature sensor	+	+	+	+	+	+	+	+
Air humidity sensor	+	+	+	+	+	+	+	+
Drainage channel heating	-	+	-	+	-	+	-	+
Front panel made of natural wood	+	+	+	+	+	+	+	+
Control (remote control) number of speeds: 4; operating mode (recovery, supply, exhaust); Timer; Clock; LED lighting	+	+	+	+	+	+	+	+
Automaticсичний режим	Option	+	Option	+	Option	+	Option	+
Control via mobile application	-	+	-	+	-	+	-	+
Dispatching	-	+	-	+	-	+	-	+

CLIMTEC



# Optima series

Modern  
and individual!

Acrylic surface

LED lighting

Time indication

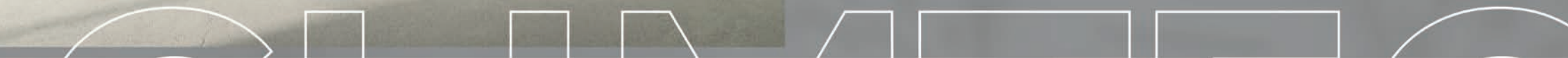
**Wi-Fi, sensor system**  
( $t^{\circ}$ ,  $CO_2$ , вологості)





## series Optima

A new series of Climtec recuperators that combine eco-friendly materials and modern technologies. The stylish design of the recuperator allows you to fit it into any interior. A feature of the Optima series recuperators is the possibility of choosing an individual front panel, a highly efficient air distribution module and the possibility of controlling the recuperator using a mobile application. Optima recuperators are available in Standard and Profi configurations in an expanded palette of colors.



## Product range Optima



320-600 mm



320-600 mm



410-1000 mm



410-1000 mm



### Recuperator Optima 100 Standard

Diameter of the working module without insulation, mm	100
Diameter of the mounting hole, mm	112
Voltage, V	220/230
CO <sub>2</sub> sensor	Option
Supply/exhaust air volume, m <sup>3</sup> /h max	40/40
Air humidity sensor	+
Control via mobile application	-
Efficiency, %	up to 93

### Recuperator Optima 100 Profi

Diameter of the working module without insulation, mm	100
Diameter of the mounting hole, mm	112
Voltage, V	220/230
CO <sub>2</sub> sensor	+
Supply/exhaust air volume, m <sup>3</sup> /h max	40/40
Air humidity sensor	+
Control via mobile application	+
Efficiency, %	up to 93

### Recuperator Optima 125 Standard

Diameter of the working module without insulation, mm	125
Diameter of the mounting hole, mm	142
Voltage, V	220/230
CO <sub>2</sub> sensor	Option
Supply/exhaust air volume, m <sup>3</sup> /h max	60/60
Air humidity sensor	+
Control via mobile application	-
Efficiency, %	up to 93

### Recuperator Optima 125 Profi

Diameter of the working module without insulation, mm	125
Diameter of the mounting hole, mm	142
Voltage, V	220/230
CO <sub>2</sub> sensor	+
Supply/exhaust air volume, m <sup>3</sup> /h max	60/60
Air humidity sensor	+
Control via mobile application	+
Efficiency, %	up to 93



## Product range Optima



### Recuperator Optima 150 Standard

Diameter of the working module without insulation, mm	150
Diameter of the mounting hole, mm	162
Voltage, V	220/230
CO <sub>2</sub> sensor	Option
Supply/exhaust air volume, m <sup>3</sup> /h max	100/100
Air humidity sensor	+
Control via mobile application	-
Efficiency, %	up to 93

### Recuperator Optima 150 Profi

Diameter of the working module without insulation, mm	150
Diameter of the mounting hole, mm	162
Voltage, V	220/230
CO <sub>2</sub> sensor	+
Supply/exhaust air volume, m <sup>3</sup> /h max	100/100
Air humidity sensor	+
Control via mobile application	+
Efficiency, %	up to 93

### Recuperator Optima 200+ Standard

Diameter of the working module without insulation, mm	200
Diameter of the mounting hole, mm	225
Voltage, V	220/230
CO <sub>2</sub> sensor	Option
Supply/exhaust air volume, m <sup>3</sup> /h max	185/185
Air humidity sensor	+
Control via mobile application	-
Efficiency, %	up to 93

### Recuperator Optima 200+ Profi

Diameter of the working module without insulation, mm	200
Diameter of the mounting hole, mm	225
Voltage, V	220/230
CO <sub>2</sub> sensor	+
Supply/exhaust air volume, m <sup>3</sup> /h max	185/185
Air humidity sensor	+
Control via mobile application	+
Efficiency, %	up to 93

# Optima series

ACRYLIC SURFACE

LED lighting

Time indication

**Wi-Fi, sensor system**  
(t°, CO<sub>2</sub>, humidity)



Optima color palette  
Bedrooms and living rooms

## Exquisite and stylish design

RAL 7047  
Телегей 4

CMYK (C)  
0 0 5 20

CMYK (U)  
0 0 0 12

RAL 9001  
Кремово-білий

CMYK (C)  
0 0 10 5

CMYK (U)  
0 0 10 0

RAL 9010  
Білий

CMYK (C)  
0 0 5 0

CMYK (U)  
0 0 7 0

RAL 1015  
Світла слонова  
кістка

CMYK (C)  
0 5 30 10

CMYK (U)  
10 10 20 0





Optima color palette  
Office premises

# Individual and modern

RAL 6009  
Ялицевий зелений

CMYK (C)  
90 50 90 60

CMYK (U)  
100 60 80 60

RAL 3007  
Чорно-червоний

CMYK (C)  
60 100 70 80

CMYK (U)  
50 100 90 40

RAL 7024  
Графітовий сірий

CMYK (C)  
80 60 50 40

CMYK (U)  
90 60 30 60

RAL 7022  
Сіра умбра

CMYK (C)  
30 20 40 80

CMYK (U)  
80 80 100 75





Optima color palette  
Children's rooms

Fit into  
**any interior**

RAL 6019  
Біло-зелений

CMYK (C)  
35 0 40 0

CMYK (U)  
30 0 30 0

RAL 3015  
Світло рожевий

CMYK (C)  
0 50 20 10

CMYK (U)  
10 40 10 0

RAL 5024  
Пастельно-синій

CMYK (C)  
70 20 10 20

CMYK (U)  
63 17 7 8

RAL 4010  
Телемагента

CMYK (C)  
10 90 30 0

CMYK (U)  
0 100 0 0



Individual  
solution

Optima

## PATRIOTIC MODELS

Application of your logo  
or other image





Individual  
solution

Optima



Your brand



Application of your logo  
or other image



Turn a technological household device  
into a work of art!

# PARTNERSHIP

## Automated ventilation system with heat recovery

to maintain a comfortable climate  
in any room



**Ability to write CLIMTEC/AJAX <READY> system scripts using a mobile application.**

When the level of CO<sub>2</sub> increases, the recuperator automatically selects the necessary power to stabilize the air quality.



For existing users of Ajax security systems, who already have a Hub 2 Plus central unit installed, there is also an opportunity to increase comfort in the premises, thanks to high-quality CLIMTEC supply and exhaust systems, by purchasing additional recuperators and sensors and sockets for them and controlling all additional equipment using one application. Conversely, those users who initially purchased and installed the CLIMTEC/AJAX <READY> equipment kit can further increase the security of the premises by connecting the equipment to the security panel.



The ability to connect many devices to one Hub 2 Plus central unit, that is, after purchasing one complete set of CLIMTEC/AJAX <READY> equipment, and installing it in one room, if the system needs to be expanded to other rooms, there is no need to install another Hub 2 Plus central unit. It is enough to purchase additional recuperators and sensors and sockets for them. It can be especially convenient for multi-room premises, both residential and office, as well as in schools, kindergartens, etc.



With the help of a smart Socket, it is possible to remotely turn on/off the recuperator, as well as monitor electricity consumption in the Ajax mobile application.



Optima



Climtec activates the operation mode to stabilize the air quality

Life Quality



When crossing the limit values set when configuring the scenario, life Quality transmits data to the HuB



CO<sub>2</sub>

Hub gives Relay command

HuB 2 Plus



Socket white

recuperator power management, we monitor electricity consumption

We create scenarios work



CLIMTEC

AJAX <READY>

## Optima specifications

Parameters	Optima 100		Optima 125		Optima 150		Optima 200+	
	<i>Standard</i>	<i>Profi</i>	<i>Standard</i>	<i>Profi</i>	<i>Standard</i>	<i>Profi</i>	<i>Standard</i>	<i>Profi</i>
Diameter of the working module body without insulation, mm	100	100	125	125	150	150	200	200
Diameter of the mounting hole, mm	112	112	142	142	162	162	225	225
Length, mm	320-600	320-600	410-1000	410-1000	460-1000	460-1000	480-1000	480-1000
Front panel size (WxHxD), mm	250x210x99	250x210x99	250x210x99	250x210x99	320x270x99	320x270x99	320x270x99	320x270x99
Weight, kg	2.5	2.5	2.5	2.7	4	4.2	7	7
Efficiency, %	up to 93	up to 93	up to 93	up to 93	up to 93	up to 93	up to 93	up to 93
Supply/exhaust air volume at maximum power, m³/h	40/40	40/40	60/60	60/60	100/100	100/100	240/240	240/240
Supply/exhaust air volume at minimum power, m³/h	10/10	10/10	25/25	25/25	45/45	45/45	60/60	60/60
Recommended area of the premise, up to m² h=2.7 m	15	15	25	25	40	40	90	90
Recommended number of people in the premise, up to	2	2	4	4	5	5	8	8
Voltage, V	220/230	220/230	220/230	220/230	220/230	220/230	220/230	220/230
Electric power input of the fan drive, W	6	6	7	7	24	24	46	46
Power consumption of air heater, W/h	40	40	40	40	100	100	300	300
Sound power level (LWA) at min/max speed, dB	22/32	22/32	26/38	26/38	26/38	26/38	22/32	22/32

# Optima specifications

Parameters	Optima 100		Optima 125		Optima 150		Optima 200+	
	Standard	Profi	Standard	Profi	Standard	Profi	Standard	Profi
Aluminum plate cross flow heat exchanger	+	+	+	+	+	+	+	+
Airflow shut-off valve	Automatic	Automatic	Automatic	Automatic	Automatic	Automatic	Automatic	Automatic
Information LED panel	+	+	+	+	+	+	+	+
Air filter (G3)	+	+	+	+	+	+	+	+
CO <sub>2</sub> sensor	option	+	option	+	option	+	option	+
Supply air temperature sensor	+	+	+	+	+	+	+	+
Outside air temperature sensor	+	+	+	+	+	+	+	+
Air humidity sensor	+	+	+	+	+	+	+	+
Drainage channel heating	-	+	-	+	-	+	-	+
Front panel made of MDF material	+	+	+	+	+	+	+	+
Control (remote control) number of speeds: 4; operating mode (recovery, supply, exhaust); Timer; Clock; LED lighting	+	+	+	+	+	+	+	+
Автоматический режим	Option	+	Option	+	Option	+	Option	+
Control via mobile application	-	+	-	+	-	+	-	+
Dispatching	-	+	-	+	-	+	-	+





# PASSIVE AIR SUPPLY VALVES

Passive ventilation valves (air vents) are a modern replacement for a through-ventilation hole in the wall and perform a function of passive air ventilation. No need for power supply significantly expands the space for installation and is an excellent budget solution for premises that require more loyal technical conditions of operation and ventilation.



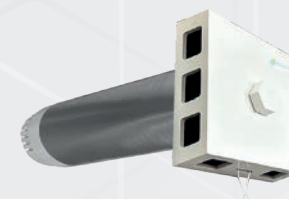
## PK 100

Diameter of the body of the working module without insulation, mm	100
Diameter of the mounting hole	112
Air filter	+



## PK 125

Diameter of the body of the working module without insulation, mm	125
Diameter of the mounting hole	142
Air filter	+



## PK 150

Diameter of the body of the working module without insulation, mm	150
Diameter of the mounting hole	162
Air filter	+

Задня решітка може бути пофарбована у колір фасаду



# NON-STANDARD SOLUTIONS

## THIN WALLS

Climtec recuperators can be installed in rooms with thin walls - frame houses, houses made of SIP panels, as well as houses built using Stald technology.

A specially designed flange allows you to fit the recuperator perfectly into a wall of any thickness.

The flange is made of MDF and can be painted in the color of recuperator, which will perfectly fit into the interior.







# NON-STANDARD SOLUTIONS

## EXTENSION AND SWIVEL MODULE

Usually, recuperators are mounted in the wall. However, there are non-standard situations when their installation requires appropriate solutions.

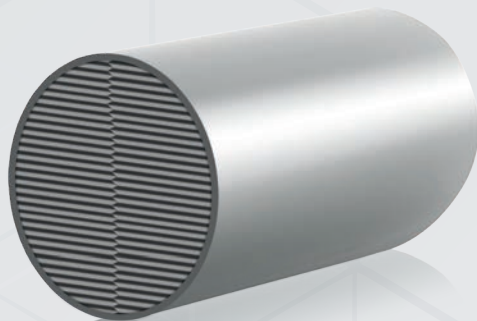


For example, you can mount the recuperator in the ceiling using a technology of extending the pipe and creating a swivel module. A similar solution is often used in private houses when it is possible to run a pipe through the attic.



# ADVANTAGES OF CLIMTEC RECUPERATORS

---



## **Aluminum heat exchanger:**

does not oxidize, works in a wide temperature range, and the oxide film prevents oxidation and, in turn, the appearance of mold. The design of the heat exchanger provides a large heat exchange area.



## **Air heater:**

maintains a comfortable indoor microclimate even in the worst frosts. The heater, which is located after the heat exchanger, reheats the air, thanks to which it has the maximum efficiency of heating with a small consumption power of the heater itself



## **Airflow shut-off valve:**

prevents wind blowing, drafts and noise. It also eliminates the possibility of recuperator freezing at extremely low temperatures. If necessary, airflows can be completely blocked.



# WHY CLIMTEC RECUPERATORS IN PARTICULAR?

CLIMTEC decentralized ventilation systems are much more profitable compared to centralized ones. This is due to more compact sizes, ease of installation and maintenance.

**Apartments and private houses, schools and kindergartens, gyms, offices and production facilities - recuperators can be installed almost everywhere without the need to design complex ventilation systems.**

We recommend installing the Climtec recuperators in the upper part of the wall bordering the street. At the same time, the optimal distance from the ceiling is recommended to be about 30 cm: it is there that recuperators can carry out ventilation as efficiently as possible.



**CLIMTEC LTD** is a Ukrainian creator and manufacturer of decentralized supply and exhaust ventilation systems with heat recovery.

Climtec recuperators allow you to ventilate the room, maintaining the optimal temperature regardless of what it is outside. The recuperator simultaneously removes exhaust air and supplies fresh air. Thanks to the heat exchange between the exhaust and supply air, the temperature of the room is maintained and the humidity is normalized.

The main advantage of recuperators is their compact size, low price and ease of installation, unlike, for example, centralized ventilation systems. It is enough to make a hole of the required diameter in the wall bordering the street and install the recuperator. The whole process usually takes no more than two hours and does not harm the appearance of the room, perfectly fitting into the existing design.





Climtec™ Recuperators have passed the test of time and received high quality marks from customers who already use decentralized ventilation systems our trademark.

## The main tasks that Climtec™ Recuperators successfully cope with:

### VENTILATION

dust protection  
and extraneous odors

### CARE ABOUT HEALTH

protection against mold  
and its warning

### ENERGY SAVING

saving money  
during ventilation







For your interior



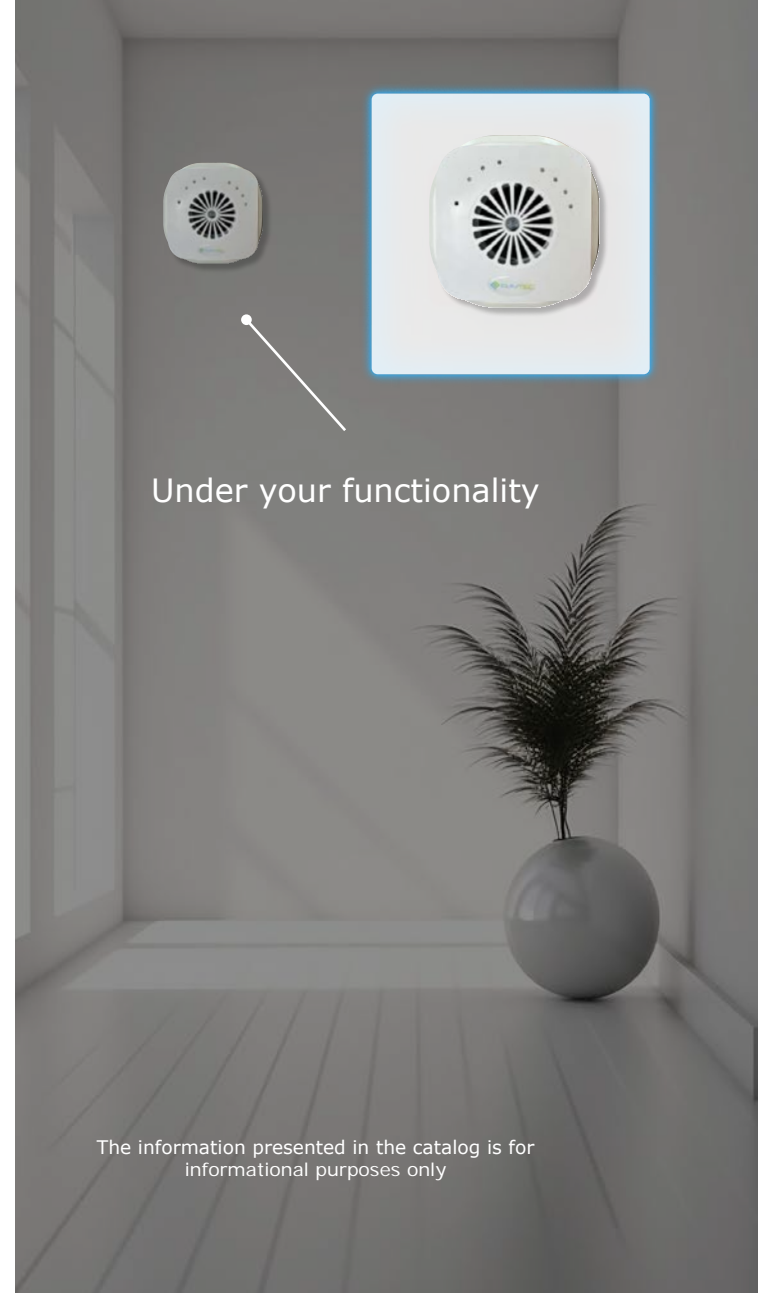
**61101, Ukraine, Kharkiv, st.  
August 23, 20A, office 306**



For your needs



CLIMTEC reserves the right to make any changes to the construction, design, specification, replace the components of the manufactured products at any time without prior warning in order to improve the quality of the manufactured products and further development of production.



Under your functionality

The information presented in the catalog is for informational purposes only